

Monoclonal Anti-*Mycobacterium tuberculosis* LAM, Clone CS-40 (produced *in vitro*)

Catalog No. NR-13812

This reagent is the tangible property of the U.S. Government.

Product Description:

Antibody Class: IgG_{1κ}

Antibody Designation: CS-40

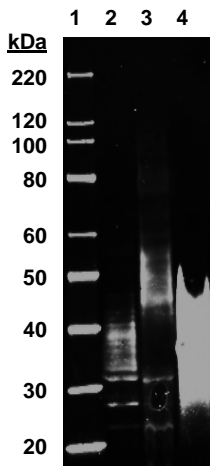
Monoclonal antibody to *Mycobacterium tuberculosis*, strain H37Rv lipoarabinomannan (LAM), clone CS-40 was produced in cell culture using a B cell hybridoma generated by the fusion of myeloma cells with immunized mouse splenocytes.

Lot: 70018542

Manufacturing Date: 24SEP2018

TEST	SPECIFICATIONS	RESULTS
Antibody Class	Report results	IgG _{1κ}
Functional Activity by Western Blot Culture filtrate protein (CFP) fraction (BEI Resources NR-14825) Cytosol (CYT) fraction (BEI Resources NR-14835) Lipoarabinomannan (LAM) fraction (BEI Resources NR-14849)	Report results Report results Report results	Reactive (Figure 1) Reactive (Figure 1) Reactive (Figure 1)
Sterility	0.22 μm filter-sterilized	0.22 μm filter-sterilized

Figure 1: Functional Activity by Western Blot



Lane 1: MagicMark™ XP Western Protein Standard
Lane 2: CFP fraction (BEI Resources NR-14825)
Lane 3: CYT fraction (BEI Resources NR-14835)
Lane 4: LAM fraction (BEI Resources NR-14849)

/Heather Couch/
Heather Couch

21 DEC 2018

Program Manager or designee, ATCC Federal Solutions

ATCC®, on behalf of BEI Resources, hereby represents and warrants that the material provided under this certificate has been subjected to the tests and procedures specified and that the results described, along with any other data provided in this certificate, are true and accurate to the best of ATCC®'s knowledge.

ATCC® is a trademark of the American Type Culture Collection.

You are authorized to use this product for research use only. It is not intended for human use.

