

Certificate of Analysis for NR-46131

Escherichia coli – *Staphylococcus aureus* Shuttle Vector pCN40, Recombinant in *Staphylococcus aureus*

Catalog No. NR-46131

Product Description: NR-46131 is a culture of *Staphylococcus aureus* (*S. aureus*), strain RN4220 (RN9594, NRS594) containing the *Escherichia coli* (*E. coli*)-staphylococcal shuttle vector pCN40. Vector pCN40 contains the *E. coli* ColE1 replication origin, the *S. aureus* pT181 *cop-wt-repC* replicon and the *P_{blaz}* promoter. Vector pCN40 was deposited as resistant to ampicillin and erythromycin in *E. coli* and resistant to erythromycin in *S. aureus*.

Lot¹: 70018982

Manufacturing Date: 03OCT2018

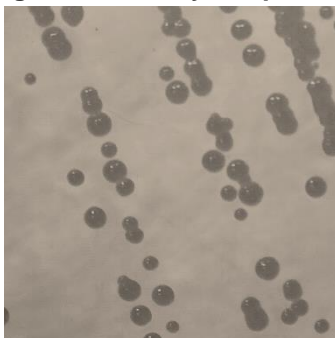
TEST	SPECIFICATIONS	RESULTS
Phenotypic Analysis Cellular morphology Colony morphology ² Motility (wet mount) VITEK® MS (MALDI-TOF)	Gram-positive cocci Report results Report results <i>S. aureus</i>	Gram-positive cocci Circular, convex, entire, smooth and cream (Figure 1) Non-motile <i>S. aureus</i> (99.9%)
Confirmation of Vector	Resistant to erythromycin	Resistant to erythromycin
Purity (post-freeze)³	Consistent with expected colony morphology	Consistent with expected colony morphology
Viability (post-freeze)²	Growth	Growth

¹NR-46131 lot 70018982 was produced by inoculation of BEI Resources NRS-46131 lot 62782857 into Casitone-Yeast broth containing 0.1 M glycerol phosphate and 10 µg/mL erythromycin and incubated for 1 day at 37°C in an aerobic atmosphere with shaking. Broth inoculum was passaged once in Casitone-Yeast broth containing 0.1 M glycerol phosphate and 10 µg/mL erythromycin and grown for 1 day at 37°C in an aerobic atmosphere with shaking to produce this lot.

²1 day at 37°C in an aerobic atmosphere on Tryptic Soy agar with 10 µg/mL erythromycin

³Purity of this lot was assessed for 7 days at 37°C in an aerobic atmosphere with 5% CO₂ on Tryptic Soy agar with 5% defibrinated sheep blood.

Figure 1: Colony Morphology



/Heather Couch/
Heather Couch

18 DEC 2018

Program Manager or designee, ATCC Federal Solutions

ATCC®, on behalf of BEI Resources, hereby represents and warrants that the material provided under this certificate has been subjected to the tests and procedures specified and that the results described, along with any other data provided in this certificate, are true and accurate to the best of ATCC®'s knowledge.

ATCC® is a trademark of the American Type Culture Collection.

You are authorized to use this product for research use only. It is not intended for human use.



BEI Resources

www.beiresources.org

E-mail: contact@beiresources.org

Tel: 800-359-7370

Fax: 703-365-2898