

Genomic RNA from Human Metapneumovirus, TN/91-316

Catalog No. NR-46442

Product Description: Genomic RNA was isolated from a preparation of cell lysate and supernatant from *Macaca mulatta* kidney epithelial cells¹ infected with Human Metapneumovirus (HMPV), TN/91-316.

Lot²: 70013123

Manufacturing Date: 02JUL2018

TEST	SPECIFICATIONS	RESULTS
Genotypic Analysis Sequencing of species-specific region (~ 850 nucleotides)	≥ 98% identity with HMPV, TN/91-316 (GenBank: KC403971.1) Consistent with source organism (BEI Resources NR-22232)	100% identity with HMPV, TN/91-316 (GenBank: KC403971.1) Consistent with NR-22232
Functional Activity by RT-PCR Amplification³ RNA-directed RNA polymerase L gene	~ 1000 base pair amplicon	~ 1000 base pair amplicon (Figure 1)
Pre-Vial Concentration by RiboGreen[®] Measurement (Viral, Cellular and Carrier)⁴	Report results	18.2 ng per 100 µL (0.182 µg/mL)
Estimated Amount per Vial⁴	Report Results	18.2 ng
Virus Inactivation 10% of total yield inoculated on LLC-MK2 Derivative cells ¹ and evaluated for cytopathic effect (CPE) and viral antigen expression by indirect immunofluorescence assay (IFA) after serial passage ^{5,6}	No viable virus detected	No viable virus detected

¹LLC-MK2 Derivative: ATCC[®] CCL-7.1™

²Nucleic acid was extracted from a preparation of HMPV, TN/91-316 (BEI Resources NR-22232 lot 70005955), using a QIAamp[®] Viral RNA Mini Kit (Qiagen[®] 52906).

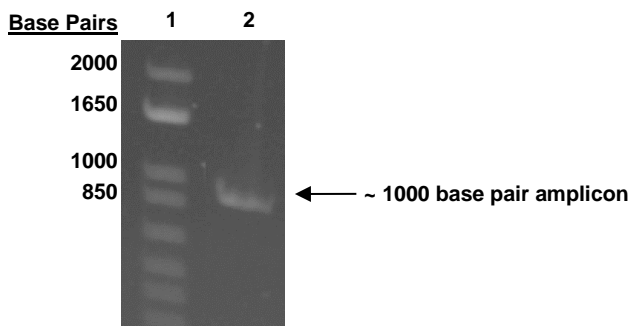
³Reverse transcription was performed using an iScript[™] cDNA Synthesis Kit (Bio-Rad 170-8891) with 10 µL of NR-46442 in a 20 µL reaction; PCR was performed using iTaq[™] DNA Polymerase (Bio-Rad 170-8870) with 5 µL of cDNA in a 50 µL reaction.

⁴Measurement is determined pre-vial prior to dilution due to the limit of detection of the quantification method.

⁵Using Anti-Human Metapneumovirus Antibody, clone 132 (Millipore MAB80124)

⁶Use of the QIAamp[®] Viral RNA Mini Kit has been demonstrated to consistently inactivate 100% of HMPV viruses as shown by the absence of CPE and viral antigen expression by IFA after plating the entire extract on virus-susceptible cells for two passages.

Figure 1: Functional Activity of NR-46442 by RT-PCR Amplification of RNA-directed RNA polymerase L Gene



Lane 1: Invitrogen[™] TrackIt[™] 1 Kb Plus DNA Ladder
Lane 2: PCR product from 0.5 µL of NR-46442

/Heather Couch/

Heather Couch

21 DEC 2018

Program Manager or designee, ATCC Federal Solutions

ATCC®, on behalf of BEI Resources, hereby represents and warrants that the material provided under this certificate has been subjected to the tests and procedures specified and that the results described, along with any other data provided in this certificate, are true and accurate to the best of ATCC®'s knowledge.

ATCC® is a trademark of the American Type Culture Collection.

You are authorized to use this product for research use only. It is not intended for human use.

