

***Brucella abortus*, Strain 19 (S19)**

Catalog No. NR-10134

Product Description: *Brucella abortus* (*B. abortus*), strain 19 (S19) was isolated in 1923 from cow's milk in Maryland, USA. *B. abortus*, strain 19 (S19) is a spontaneously attenuated strain that has been widely used as a vaccine for bovine animals, but is known to induce abortions in pregnant bovines and is virulent for humans.

Lot¹: 70000098

Manufacturing Date: 09DEC2016

TEST	SPECIFICATIONS	RESULTS
Phenotypic Analysis Cellular morphology Colony morphology ² Motility ³ Biochemical tests Oxidase Urease Hydrogen sulfide production Arginine dihydrolase Arabinose Glucose Xylose	Gram-negative coccobacillus Report results Non-motile Positive Positive (> 5 minutes) Positive Negative Positive Positive Report results	Gram-negative bacillus Irregular, raised, undulate, translucent and cream (Figure 1) Non-motile Positive Positive (> 5 minutes) Positive Negative Positive Positive Negative
Genotypic Analysis Sequencing of 16S ribosomal RNA gene (~ 605 base pairs)	≥ 99% sequence identity to <i>B. abortus</i> , strain 19 (GenBank: CP000887.1 and CP000888.1)	100% sequence identity to <i>B. abortus</i> , strain 19 (GenBank: CP000887.1 and CP000888.1) ⁴
Purity (post-freeze)⁵	Growth consistent with expected colony morphology	Growth consistent with expected colony morphology
Viability (post-vialing)²	Growth	Growth

¹NR-10134 was produced by inoculation of the depositor material into Tryptic Soy broth and grown 2 days at 37°C in an aerobic atmosphere with 5% CO₂. Broth inoculum was added to Tryptic Soy agar kolles which were grown 2 days at 37°C in an aerobic atmosphere with 5% CO₂ to produce this lot.

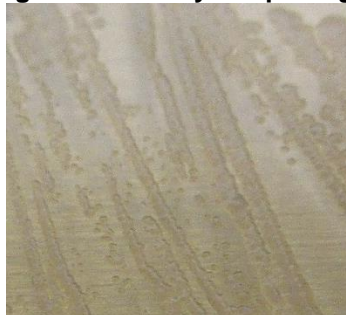
²3 days at 37°C in an aerobic atmosphere with 5% CO₂ on Tryptic Soy agar

³Motility test performed on Remel™ Motility Test Medium w/TTC indicator for 7 days at 37°C in an aerobic atmosphere with 5% CO₂.

⁴Also consistent with other *Brucella* species

⁵Purity of this lot was assessed for 28 days at 37°C in an aerobic atmosphere with 5% CO₂ on Tryptic Soy agar with 5% defibrinated sheep blood.

Figure 1: Colony Morphology



/Kristina Peterman/

Kristina Peterman

24 JAN 2019

Program Manager or designee, ATCC Federal Solutions

/Heather Couch/

Heather Couch

24 JAN 2019

Program Manager or designee, ATCC Federal Solutions

ATCC®, on behalf of BEI Resources, hereby represents and warrants that the material provided under this certificate has been subjected to the tests and procedures specified and that the results described, along with any other data provided in this certificate, are true and accurate to the best of ATCC®'s knowledge.

ATCC® is a trademark of the American Type Culture Collection.
You are authorized to use this product for research use only. It is not intended for human use.

