

Escherichia coli, Strain Ec1457

Catalog No. NR-51341

Product Description: *Escherichia coli* (*E. coli*), strain Ec1457 was isolated in 1967 from the bloodstream of a patient with septicemia in Denmark. *E. coli*, strain Ec1457 is a host bacterium for phi05_1387UV, phi05_1387B and phi06_2974B, all temperate phages.

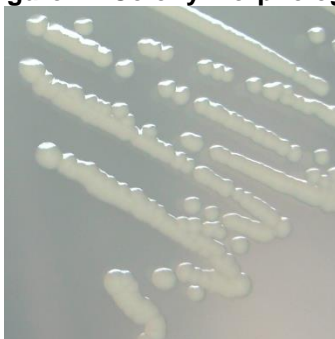
Lot¹: 70017422

Manufacturing Date: 25JUL2018

TEST	SPECIFICATIONS	RESULTS
Phenotypic Analysis Cellular morphology Colony morphology ² Motility (wet mount) VITEK [®] MS (MALDI-TOF)	Gram-negative rods Report results Report results <i>E. coli</i>	Gram-negative rods Circular, convex, entire, smooth and cream (Figure 1) Motile <i>E. coli</i> (99.9%)
Genotypic Analysis Sequencing of 16S ribosomal RNA gene (~ 1480 base pairs)	≥ 99% sequence identity with <i>E. coli</i> type strain (GenBank: JMST01000030.1)	99.7% sequence identity with <i>E. coli</i> type strain (GenBank: JMST01000030.1) ³
Purity (post-freeze)⁴	Growth consistent with expected colony morphology	Growth consistent with expected colony morphology
Viability (post-freeze)²	Growth	Growth

¹NR-51341 was produced by inoculation of BEI Resources HMC-659 lot 59773828 into Tryptic Soy broth and grown 1 day at 37°C in an aerobic atmosphere. Broth inoculum was added to Tryptic Soy agar kolles which were grown 1 day at 37°C in an aerobic atmosphere to produce this lot.
²1 day at 37°C in an aerobic atmosphere on Tryptic Soy agar
³Also consistent with *Shigella* and other *Escherichia* species
⁴Purity of this lot was assessed for 7 days at 37°C in an aerobic atmosphere with 5% CO₂ on Tryptic Soy agar.

Figure 1: Colony Morphology



/Heather Couch/
 Heather Couch

13 FEB 2019

Program Manager or designee, ATCC Federal Solutions

ATCC[®], on behalf of BEI Resources, hereby represents and warrants that the material provided under this certificate has been subjected to the tests and procedures specified and that the results described, along with any other data provided in this certificate, are true and accurate to the best of ATCC[®]'s knowledge.

ATCC[®] is a trademark of the American Type Culture Collection.
 You are authorized to use this product for research use only. It is not intended for human use.

