

**Escherichia coli, Strain Ec1522**

**Catalog No. NR-51346**

**Product Description:** *Escherichia coli* (*E. coli*), strain Ec1522 was isolated from the bloodstream of a patient with septicemia. *E. coli*, strain Ec1522 is a host bacterium for phi05\_1558B, phi06\_3242S and phi06\_3242B, all temperate phages.

**Lot<sup>1</sup>: 70017430**

**Manufacturing Date: 02AUG2018**

TEST	SPECIFICATIONS	RESULTS
<b>Phenotypic Analysis</b> Cellular morphology Colony morphology <sup>2</sup>  Motility (wet mount) VITEK <sup>®</sup> MS (MALDI-TOF)	Gram-negative rods Report results  Report results <i>E. coli</i>	Gram-negative rods Circular, low convex, entire, smooth and cream (Figure 1) Non-motile <i>E. coli</i> (99.9%)
<b>Genotypic Analysis</b> Sequencing of 16S ribosomal RNA gene (~ 1480 base pairs)	≥ 99% sequence identity with <i>E. coli</i> type strain (GenBank: JMST01000030.1)	99.1% sequence identity with <i>E. coli</i> type strain (GenBank: JMST01000030.1) <sup>3</sup>
<b>Purity (post-freeze)<sup>4</sup></b>	Growth consistent with expected colony morphology	Growth consistent with expected colony morphology
<b>Viability (post-freeze)<sup>2</sup></b>	Growth	Growth

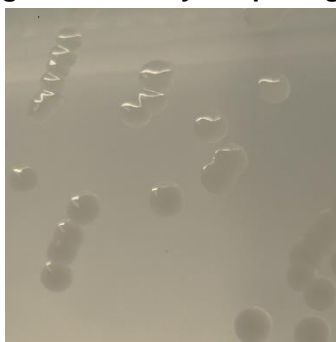
<sup>1</sup>NR-51346 was produced by inoculation of BEI Resources HMC-665 lot 59773835 into Tryptic Soy broth and grown 1 day at 37°C in an aerobic atmosphere. Broth inoculum was added to Tryptic Soy agar kolles, which were grown 1 day at 37°C in an aerobic atmosphere to produce this lot.

<sup>2</sup>1 day at 37°C in an aerobic atmosphere on Tryptic Soy agar

<sup>3</sup>Also consistent with *Shigella* and other *Escherichia* species

<sup>4</sup>Purity of this lot was assessed for 7 days at 37°C in an aerobic atmosphere with 5% CO<sub>2</sub> on Tryptic Soy agar.

**Figure 1: Colony Morphology**



/Heather Couch/  
 Heather Couch

04 MAR 2019

Program Manager or designee, ATCC Federal Solutions

ATCC<sup>®</sup>, on behalf of BEI Resources, hereby represents and warrants that the material provided under this certificate has been subjected to the tests and procedures specified and that the results described, along with any other data provided in this certificate, are true and accurate to the best of ATCC<sup>®</sup>'s knowledge.

ATCC<sup>®</sup> is a trademark of the American Type Culture Collection.

You are authorized to use this product for research use only. It is not intended for human use.

