

Plasmid pMRLB.41 Containing Gene Rv3804c (Protein Ag85A) from *Mycobacterium tuberculosis*

Catalog No. NR-13292

This reagent is the tangible property of the U.S. Government.

Product Description: NR-13292 is a recombinant expression vector containing *Mycobacterium tuberculosis* gene Rv3804c, which is a precursor of the 85-A antigen, also referred to as a fibronectin-binding protein (FpbA), that is involved in cell wall mycoloylation. Gene Rv3804c was amplified by PCR and cloned into pET15b for expression in *Escherichia coli*.

Lot: 04.EC.09.03

Manufacturing Date: 03SEP2004

TEST	SPECIFICATIONS	RESULTS
Agarose Gel Electrophoresis (see attached QC Gel)¹ Linearization with <i>Xho</i> I Linearization with <i>Nde</i> I Linearization with <i>Bam</i> HI Digestion with <i>Nde</i> I and <i>Bam</i> HI	~ 6.58 kb ~ 6.58 kb ~ 6.58 kb ~ 0.893 kb (insert); ~ 5.69 kb (vector)	~ 6.58 kb ~ 6.58 kb ~ 6.58 kb ~ 0.893 kb; ~ 5.69 kb
Concentration by OD₂₆₀	Report results	0.08 µg/µL
Absorbance Ratio (OD₂₆₀/OD₂₈₀)	Report results	1.9

¹Performed by Colorado State University under the TB Vaccine Testing and Research Materials Contract (NIH)

/Heather Couch/

Heather Couch

15 MAR 2019

Program Manager or designee, ATCC Federal Solutions

ATCC®, on behalf of BEI Resources, hereby represents and warrants that the material provided under this certificate has been subjected to the tests and procedures specified and that the results described, along with any other data provided in this certificate, are true and accurate to the best of ATCC®'s knowledge.

ATCC® is a trademark of the American Type Culture Collection.

You are authorized to use this product for research use only. It is not intended for human use.



QC gel

Restriction enzymes used in QC analysis:

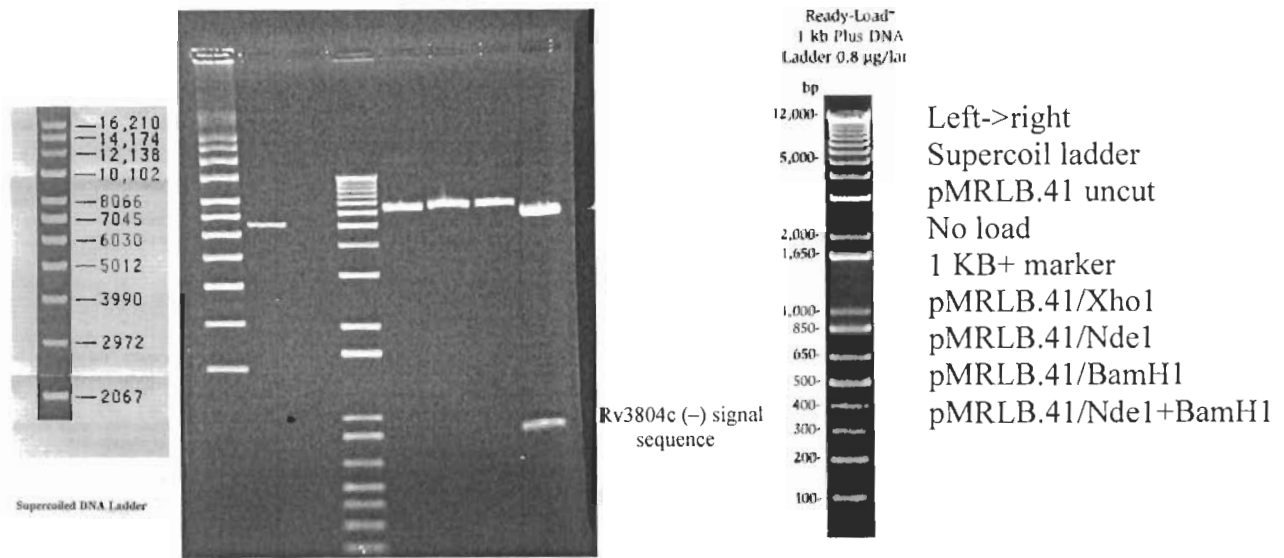
NdeI & BamHI (cloning), XhoI (insert diagnostic – 1 site in 3804c)

Expected size of restriction fragments

Vector 5.69 kb pET15b + NdeI +BamHI
Insert 0.893 Rv3804c + NdeI +BamHI
Other 6.58kb linearized plasmid – NdeI,BamHI,XhoI single digests

Gel description (file number, % agarose, buffer) lmwRec1#2 pp10, 1%, 1X TAE
Molecular weight markers Invitrogen 1KB Plus, Invitrogen Supercoiled DNA Ladder

Left->right



Generated by

Scott Kelly

Date

9/8/04

Supervisor

John T. Bell

Date

9-9-04

Form 4.2.03.JB