

Plasmid pMRLB.12 Containing Gene Rv1980c (Protein Mpt64) from *Mycobacterium tuberculosis*

Catalog No. NR-13273

This reagent is the tangible property of the U.S. Government.

Product Description: NR-13273 is a recombinant expression vector containing *Mycobacterium tuberculosis* gene RV1980c, which encodes the secreted immunogenic protein Mpt64. Gene Rv1980c was amplified by PCR and cloned into pET15b for expression in *Escherichia coli*.

Lot: 03.EC.08.26

Manufacturing Date: 26MAY2009

TEST	SPECIFICATIONS	RESULTS
Agarose Gel Electrophoresis (see attached QC Gel)¹ Linearization with <i>NdeI</i> Linearization with <i>SmaI</i> Digestion with <i>NdeI</i> and <i>HindIII</i>	~ 6.3 kb ~ 6.3 kb ~ 0.62 kb (insert); ~ 5.7 kb (vector)	~ 6.3 kb ~ 6.3 ~ 0.62 kb; ~ 5.7 kb
Concentration by OD₂₆₀	Report results	0.1 µg/µL
Absorbance Ratio (OD₂₆₀/OD₂₈₀)	Report results	1.9

¹Performed by Colorado State University under the TB Vaccine Testing and Research Materials Contract (NIH)

/Heather Couch/
Heather Couch

15 MAR 2019

Program Manager or designee, ATCC Federal Solutions

ATCC®, on behalf of BEI Resources, hereby represents and warrants that the material provided under this certificate has been subjected to the tests and procedures specified and that the results described, along with any other data provided in this certificate, are true and accurate to the best of ATCC®'s knowledge.

ATCC® is a trademark of the American Type Culture Collection.

You are authorized to use this product for research use only. It is not intended for human use.



QC gel

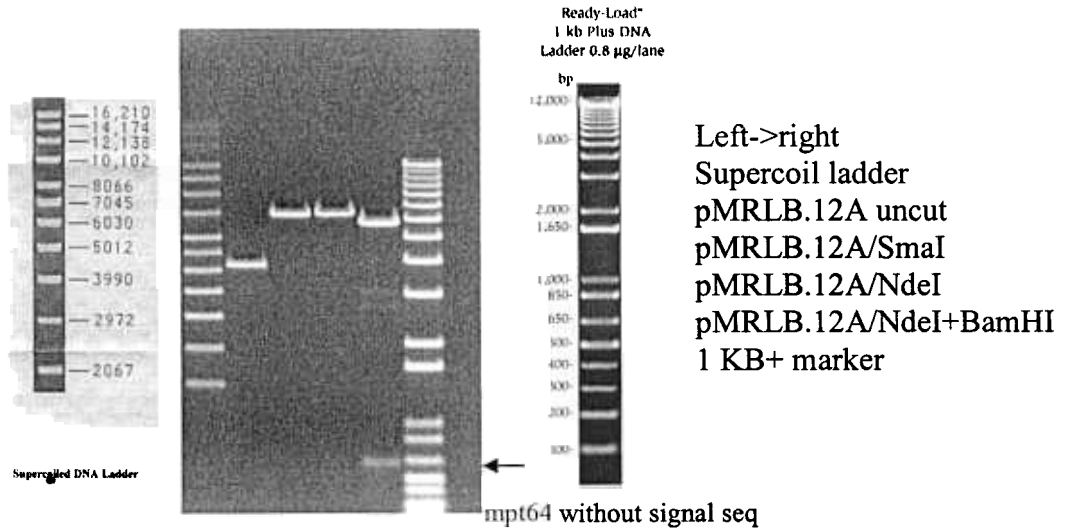
Restriction enzymes used in QC analysis NdeI, BamHI, SmaI (1 site in mpt64)

Expected size of restriction fragments

Vector 5.7 kb pET15b – NdeI +BamHI
Insert 0.62 kb mpt64 without signal sequence – NdeI +BamHI
Other 6.3 kb linearized plasmid – NdeI, SmaI single digests

Gel description (file number, % agarose, buffer) kb4 notebook2 /0.8% agarose/1X

Molecular weight markers Invitrogen 1KB Plus, Invitrogen Supercoiled DNA Ladder



Generated by

Feryt Broshman

Date

8-29-03

Supervisor

Phyllis Bell

Date

9-8-2003

Form 4.2.03.JB