

**Monoclonal Anti-*Leishmania braziliensis*, Strain M5052 (MHOM/PE/76/SL2), (produced *in vitro*)**

**Catalog No. NR-50155**

**Product Description:** Antibody Class: IgG2bk

Mouse monoclonal antibody prepared against *Leishmania braziliensis* (*L. braziliensis*) strain M5052 (MHOM/PE/76/SL2) was purified from the hybridoma supernatant by protein G affinity chromatography.

**Lot<sup>1</sup>: 70013791**

**Manufacturing Date: 09MAY2018**

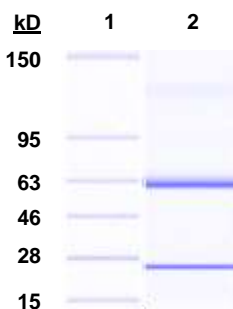
TEST	SPECIFICATIONS	RESULTS
<b>Antibody Class Determination</b>	Report results	IgG2bk
<b>Agilent® Protein 230 Analysis</b> Average Purity	Correct molecular weight (MW) for heavy and light chains Report results	Correct MW for heavy and light chains (Figure 1) 94.5% pure
<b>Concentration by Spectrophotometer at OD<sub>280</sub></b>	≥ 1.0 mg per mL	0.9 mg per mL <sup>2</sup>
<b>Functional Activity by Immunofluorescence Assay<sup>3</sup></b> <i>L. braziliensis</i> -infected mouse macrophage cells with NR-50155 <i>L. braziliensis</i> -infected mouse macrophage cells with fluorescein isothiocyanate (FITC)-conjugated goat anti-mouse IgG	Reactive Nonreactive	Reactive; staining of <i>L. braziliensis</i> amastigotes (Figure 2) Nonreactive; no specific staining of <i>L. braziliensis</i> amastigotes
<b>Sterility</b>	0.22 µm filter-sterilized	0.22 µm filter-sterilized

<sup>1</sup>Mouse monoclonal antibody was purified using protein G affinity chromatography from supernatants obtained from mouse hybridoma adapted to serum-free media.

<sup>2</sup>Although the amount of genomic DNA in the vial is below the current specification, it does not negatively impact the final product.

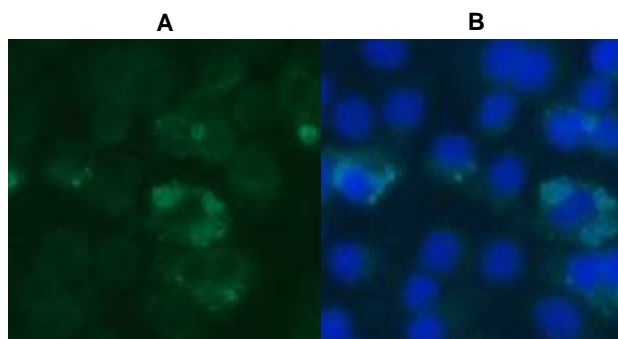
<sup>3</sup>Specific labeling of *L. braziliensis* promastigotes with NR-50155 and FITC was observed after culturing of *L. braziliensis*, strain MHOM/BR/75/M2903 (ATCC® 50135™ lot 63081055) for 2 days.

**Figure 1: Agilent® Protein 230 Analysis**



Lane 1: Protein 230 Ladder  
Lane 2: NR-50155

**Figure 2: Immunofluorescence Assay of *L. braziliensis*-Infected Macrophage Cells**



**2A:** *L. braziliensis*-infected mouse macrophage cells with NR-50155 used at a dilution of 1:500, followed by FITC-conjugated goat anti-mouse IgG (Invitrogen® A16073) as secondary antibody (1:2000).

**2B:** Image from Figure 2A with overlaid 4',6-diamidino-2-phenylindole (DAPI)-stained image.

/Heather Couch/  
Heather Couch

05 APR 2019

Program Manager or designee, ATCC Federal Solutions

ATCC®, on behalf of BEI Resources, hereby represents and warrants that the material provided under this certificate has been subjected to the tests and procedures specified and that the results described, along with any other data provided in this certificate, are true and accurate to the best of ATCC®'s knowledge.

ATCC® is a trademark of the American Type Culture Collection.

You are authorized to use this product for research use only. It is not intended for human use.

