

Mycobacterium leprae*, Strain NHDP, Gamma-Irradiated Whole Cells (lyophilized)*Catalog No. NR-19326**

This reagent is the tangible property of the U.S. Government.

Product Description: NR-19326 is a preparation of purified *Mycobacterium leprae* (*M. leprae*), strain NHDP whole cells derived from infected armadillo liver and spleen tissue. The cells are inactivated by gamma irradiation using a Cs source with delivery of 1.44 to 2.4 MRad of ionization radiation (dose range is provided due to variation across the sample chamber).

Lot: 70017846**Manufacturing Date: 13JUL2018**

Production and QC testing were performed by Colorado State University (CSU). The CSU documentation for lot *M.leprae* Whole Cells γ -irradiated 07/30/2018 is attached.

ATCC®, on behalf of BEI Resources, hereby represents and warrants that the material provided under this certificate has been subjected by the contractor to the tests and procedures specified and that the results described, along with any other data provided in this certificate, are true and accurate to the best of ATCC®'s knowledge.

ATCC® is a trademark of the American Type Culture Collection.

You are authorized to use this product for research use only. It is not intended for human use.



QC SHEET FOR LYOPHILIZED γ -IRRADIATED M.LEPRAE WHOLE CELLS

General Information

Lot Number: M.leprae Whole Cells γ -irradiated 07/30/2018

Species: Mycobacterium leprae

Strain: NHDP- 63

Cell Prep Pool :

Armadillo : 11J901 Spleen Harvested : 07.07.2017	mg cells : 67.95
Armadillo : 11K902 Spleen Harvested : 06.23.2017	mg cells : 9.26
Armadillo : 11I302 Spleen Harvested : 09.21.2017	mg cells : 97.40
Armadillo : 11I302 Spleen Harvested : 09.21.2017	mg cells : 27.84

SOP # used for Harvest : Protocol PP050.1

Notebook pages : Tissue prep book #4 ---- pp. 48, 49 & 52.

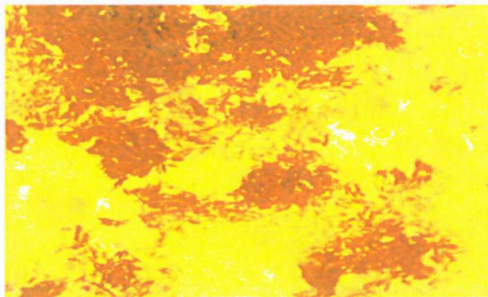
mg Weight Total : 202.45mg Concentration : 10.00mg/ml

Date irradiated : 7/13/18 By : PK

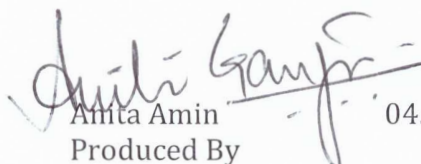
QC Information :

No growth on LJ slant, BHI broth or TSA plate

Slide picture is representative acid fast stain of whole cell pool.



Aliquot Information : Whole cells from Armadillo spleen were pooled, resuspended in buffered water, aliquoted to 10mg/ml vial, frozen, lyophilized, and irradiated.


Amta Amin
Produced By
04.02.2019
Date


C. Hechapy
Lab Supervisor

4-3-19
Date