

**Genomic DNA from *Mycobacterium canettii*, Strain 563**

**Catalog No. NR-49656**

**Product Description:** Genomic DNA was extracted from a preparation of *Mycobacterium canettii* (*M. canettii*), strain 563. *M. canettii*, strain 563 is of unknown origin.

**Lot<sup>1</sup>: 63554249**

**Manufacturing Date: 18MAY2017**

TEST	SPECIFICATIONS	RESULTS
<b>Genotypic Analysis</b> Sequencing of 16S ribosomal RNA gene (~ 1420 base pairs)	≥ 99% sequence identity to <i>M. canettii</i> , strain CIPT 140070007 (GenBank: CA0001000151.1)	100% sequence identity to <i>M. canettii</i> , strain CIPT 140070007 (GenBank: CA0001000151.1) <sup>2</sup>
<b>Agarose Gel Electrophoresis</b>	High molecular weight chromosomal DNA	High molecular weight chromosomal DNA (Figure 1)
<b>Concentration by PicoGreen<sup>®</sup> Measurement</b>	0.7 to 1.5 µg in 25 to 100 µL per vial	1.1 µg in 31 µL per vial (37 µg/mL)
<b>Amount per vial</b>	0.7 to 1.5 µg	1.1 µg
<b>Functional Activity by PCR Amplification</b> 16S ribosomal RNA gene	~ 1500 base pair amplicon	~ 1500 base pair amplicon
<b>OD<sub>260</sub>/OD<sub>280</sub> Ratio</b>	1.7 to 2.1	1.8
<b>Bacterial Inactivation</b> 10% of total yield plated on agar <sup>3,4</sup>	No viable bacteria detected	No viable bacteria detected

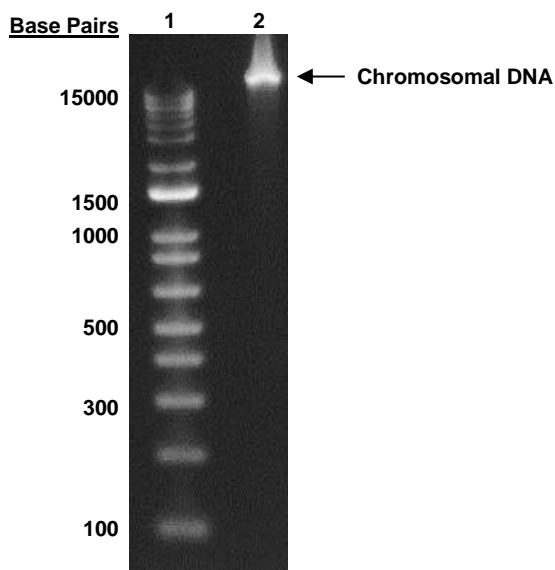
<sup>1</sup>The bacterial preparation used for extraction of genomic DNA was produced by culture of BEI Resources NR-49066 lot 63453263. Genomic DNA was extracted using proprietary technology.

<sup>2</sup>Also consistent with *M. africanum*, *M. bovis*, *M. caprae* and *M. tuberculosis*

<sup>3</sup>31 days at 37°C in an aerobic atmosphere with 5% CO<sub>2</sub> on Middlebrook 7H10 agar with OADC enrichment

<sup>4</sup>An extraction procedure was used that has been shown to consistently inactivate 100% of Gram-positive and Gram-negative bacteria.

**Figure 1: Agarose Gel Electrophoresis**



Lane 1: Invitrogen™ TrackIt™ 1 Kb Plus DNA Ladder  
Lane 2: ~ 200 ng of NR-49656

/Heather Couch/

Heather Couch

06 MAY 2019

Program Manager or designee, ATCC Federal Solutions

ATCC®, on behalf of BEI Resources, hereby represents and warrants that the material provided under this certificate has been subjected to the tests and procedures specified and that the results described, along with any other data provided in this certificate, are true and accurate to the best of ATCC®'s knowledge.

ATCC® is a trademark of the American Type Culture Collection.

You are authorized to use this product for research use only. It is not intended for human use.

