

**Monoclonal Anti-*Mycobacterium tuberculosis* LpqH (Gene Rv3763), Clone IT-19 (TB23)
(produced *in vitro*)**

Catalog No. NR-13606

This reagent is the tangible property of the U.S. Government.

Product Description:

Antibody Class: IgG₁

Antibody Designation: IT-19 (TB23)

Monoclonal antibody to *Mycobacterium tuberculosis*, strain H37Rv 19 kDa lipoprotein (LpqH) was produced in cell culture using a B cell hybridoma generated by the fusion of myeloma cells with immunized mouse splenocytes.

Lot: 70018307

Manufacturing Date: 26FEB2019

Production and QC testing were performed by Colorado State University (CSU). The CSU production documentation for lot 19.IT-19.2.8.19.mm is attached.

ATCC®, on behalf of BEI Resources, hereby represents and warrants that the material provided under this certificate has been subjected by the contractor to the tests and procedures specified and that the results described, along with any other data provided in this certificate, are true and accurate to the best of ATCC®'s knowledge.

ATCC® is a trademark of the American Type Culture Collection.

You are authorized to use this product for research use only. It is not intended for human use.



Work Sheet for Antibodies

General Information:

BEI Catalog Number: NR-13606
Product Description: Anti-IT19 (Clone IT-19 (TB23), Rv3763)
CSU Lot Number: 19.IT-19.2.8.19.mm
Species: *Mycobacterium tuberculosis*
Strain: H37Rv
Type (select one): Mouse Monoclonal
 Rabbit Polyclonal
 Guinea Pig Polyclonal

Production Information:

Source Vial Information: IT-19 (cured, resurrected), Passage #4, KE, 12/15/17, +/-7.75x10⁶ cells/mL, 90/10 fbs/dmso, growth: cDMEM/F12 (+Glutamax), 10%FBS, 1XHT, *healthier IT-19*
Cell Line: 19.IT-19.2.8.19.Hyb SOP#: AB103.5, AB104.4
Notebook/pp: Monoclonal Antibody #4 BEI, pgs. 61, 6, 70-74,76
Amount of CS Harvested: ~65mL Clarity: clear (after centrifugation and filtration)
Additional Notes: Cell debris was removed by centrifugation and filtration.
IgG Purification: N/A SOP#: N/A Notebook/pp: N/A
Ig isotype: IgG₁, Kappa light chain SOP#: AB106
Notebook/pp: Monoclonal Antibodies #4 BEI, pg. 68

QC Information:

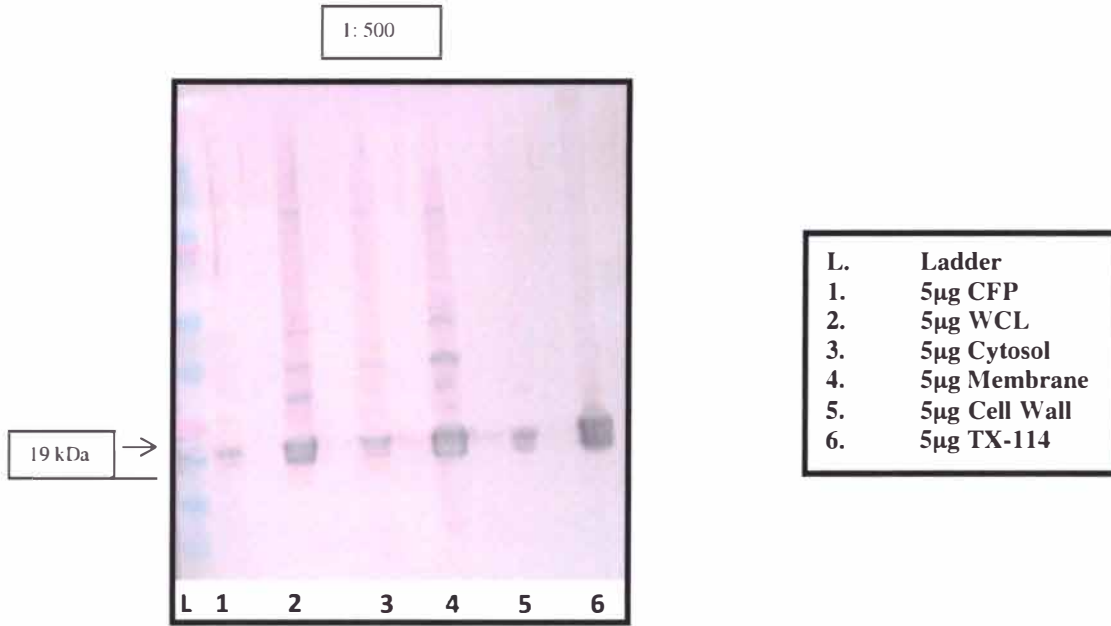
SOP#: AB102.1, SP039.1 Notebook/pp: Monoclonal Antibodies #4 BEI, pgs. 70-73
Tested by: Western blot: Titer: 1: 500
Note: ELISA data available upon request.
Special Instructions: 3% BSA recommended for blocking. Western blots developed for 3 minutes.

QC Western blot:

Tested Against: 5µg CFP (11.Rv.2.2.21.5.CFP, NR-14825), 5µg Cytosol (08.Rv.2.5.21.7.CYT), 5µg Whole Cell Lysate (15.Rv.9.17.15.WCL, NR-14822), 5µg Membrane (08.Rv.2.5.21.7.MEM), 5µg Cell Wall (14.Rv.2.12.9.CW, NR-14828), 5µg TX-114 (15.Rv.9.18.15.Tx-114, NR-14841)

* TX114 is a fraction enriched with lipoproteins such as *Psts1* (38kDa, Rv0934c), *LprG* (25kDa, Rv1411c), and *LpqH* (19kDa, Rv3763c). (Wolfe et al, 2010. JPR)

Date performed: 02/15/19



Aliquot Information: 40 vials x 0.5mL (BEI), 23 vials x 1mL (In-house), 40 vials x 0.5mL (In-house), 1 vial x <1mL (In-house, for QC)

Kala Jony 2/26/19
(Research Associate) (date)

C. McHappy 2-25-19
(Laboratory Supervisor) (date)