

Genomic DNA from *Mycobacterium tuberculosis*, Strain CDC1551

Catalog No. NR-48981

This reagent is the tangible property of the U.S. Government.

Product Description: Genomic DNA was extracted from a preparation of *Mycobacterium tuberculosis* (*M. tuberculosis*), strain CDC1551.

Lot¹: 70018685

Manufacturing Date: 21DEC2018

TEST	SPECIFICATIONS	RESULTS
Genotypic Analysis Sequencing of 16S ribosomal RNA gene (1420 base pairs)	≥ 99% sequence identity to <i>M. tuberculosis</i> , strain CDC1551 (GenBank: AE000516.2)	99.9% sequence identity to <i>M. tuberculosis</i> , strain CDC1551 (GenBank: AE000516.2) ²
Agarose Gel Electrophoresis	High molecular weight chromosomal DNA	High molecular weight chromosomal DNA (Figure 1)
Concentration by PicoGreen[®] Measurement	0.7 to 1.5 µg in 25 to 100 µL per vial	1.0 µg in 31 µL per vial (34 µg/mL)
Amount per vial	0.7 to 1.5 µg	1.0 µg
Functional Activity by PCR Amplification 16S ribosomal RNA gene	~ 1500 base pair amplicon	~ 1500 base pair amplicon
OD₂₆₀/OD₂₈₀ Ratio	1.7 to 2.1	1.9
Bacterial Inactivation 10% of total yield plated on agar ^{3,4}	No viable bacteria detected	No viable bacteria detected

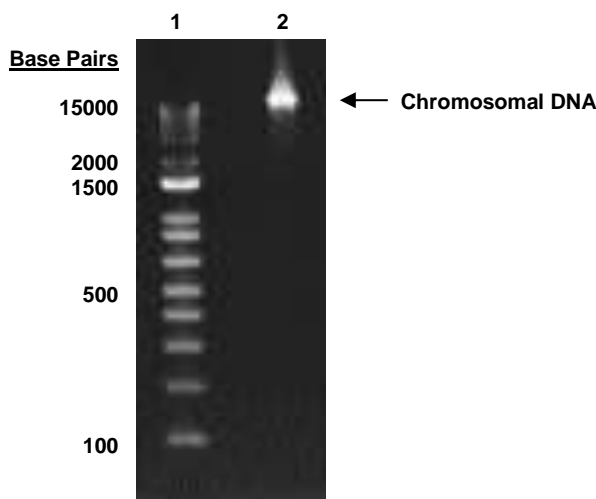
¹The bacterial preparation used for extraction of genomic DNA was produced from BEI Resources NR-13649 lot 59031929. Genomic DNA was extracted using proprietary technology.

² Also consistent with *M. africanum*, *M. bovis*, *M. canettii*, *M. caprae* and *M. microti*

³31 days at 37°C in an aerobic atmosphere with 5% CO₂ on Middlebrook 7H10 agar with OADC enrichment

⁴An extraction procedure was used that has been shown to consistently inactivate 100% of Gram-positive and Gram-negative bacteria.

Figure 1: Agarose Gel Electrophoresis



Lane 1: Invitrogen™ TrackIt™ 1 Kb Plus DNA Ladder

Lane 2: ~ 200 ng of NR-48981

/Heather Couch/

Heather Couch

22 MAY 2019

Program Manager or designee, ATCC Federal Solutions

ATCC®, on behalf of BEI Resources, hereby represents and warrants that the material provided under this certificate has been subjected to the tests and procedures specified and that the results described, along with any other data provided in this certificate, are true and accurate to the best of ATCC®'s knowledge.

ATCC® is a trademark of the American Type Culture Collection.

You are authorized to use this product for research use only. It is not intended for human use.

