

Monoclonal Anti-Flavivirus Group Antigen, Clone D1-4G2-4-15 (produced *in vitro*)

Catalog No. NR-50327

Product Description: Antibody Class: IgG1κ, IgG2α¹

Mouse monoclonal antibody prepared against the group antigen of flaviviruses was purified from clone D1-4G2-4-15 hybridoma supernatant by protein G affinity chromatography.

Lot: 64447548

Manufacturing Date: 04AUG2016

TEST	SPECIFICATIONS	RESULTS
Antibody Class Determination	Report results	IgG1κ, IgG2α ¹
Experion Pro260 Analysis	Correct molecular weight (MW) for heavy and light chains Report results	Correct MW for heavy and light chains (Figure 1) 97.5% pure
Concentration by Spectrophotometer at OD ₂₈₀	Report results	1.3 mg per mL
Functional Activity by Indirect Fluorescent Antibody Assay Dengue virus type 2 (DEN-2) ² Dengue virus type 3 (DEN-3) ³ West Nile virus (WNV) ⁴ Yellow fever virus (YFV) ⁵ Zika virus (ZIKV) ⁶ Powassan virus (POW) ⁷	Report results Report results Report results Report results Report results Report results	Fluorescence observed Fluorescence observed Fluorescence observed Fluorescence observed Fluorescence observed No fluorescence observed
Sterility	0.22 μm filter-sterilized	0.22 μm filter-sterilized

¹The clone D1-4G2-4-15 hybridoma was generated using the P3X63Ag8 myeloma fusion partner; P3X63Ag8 secretes the MOPC21 protein, an IgG1κ antibody of unknown specificity. Thus, NR-50327 contains both MOPC21 protein and flavivirus group-specific antibody of the IgG2α isotype.

²Using DEN-2, New Guinea C (BEI Resources NR-84)-infected LLC-MK2 Derivative cells (ATCC® CCL-7.1™) and DEN-2, C 0590-94 (BEI Resources NR-49746)-infected C6/36 cells (ATCC® CRL-1660™) and 1:100 and 1:300 dilutions of NR-50327

³Using DEN-3, BC 182/96 (BEI Resources NR-3797)-infected C6/36 cells (ATCC® CRL-1660™) and 1:100 and 1:300 dilutions of NR-50327

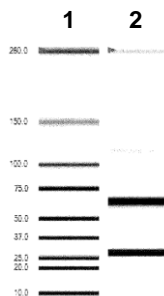
⁴Using WNV, 44-BA 80900-4 (BEI resources NR-49915)-infected and WNV, CO 1862 (BEI Resources NR-49916)-infected Vero cells (ATCC® CCL-81™) and a 1:100 dilution of NR-50327

⁵Using YFV 17D (BEI Resources NR-116)-infected Vero cells (ATCC® CCL-81™) and 1:100 and 1:300 dilutions of NR-50327

⁶Using ZIKV, H/PAN/2016/BEI-259634 (BEI Resources NR-50210)-, ZIKV, PRVABC59 (BEI Resources NR-50240)-, and ZIKV, P6-740 (BEI Resources NR-50245)-infected Vero 76, clone E6 cells (ATCC® CRL-1586™) and 1:100 and 1:300 dilutions of NR-50327

⁷Using POW, M11665 (BEI Resources NR-51182) and POW, T18-23-81 (BEI Resources NR-51183)-infected Vero cells (ATCC® CCL-81™) and 1:100 and 1:300 dilutions of NR-50327

Figure 1: Experion Pro260 Analysis



Lane 1: MW Markers (kDa)

Lane 2: NR-50327

/Heather Couch/
Heather Couch

25 APR 2019

Program Manager or designee, ATCC Federal Solutions

ATCC®, on behalf of BEI Resources, hereby represents and warrants that the material provided under this certificate has been subjected to the tests and procedures specified and that the results described, along with any other data provided in this certificate, are true and accurate to the best of ATCC®'s knowledge.

ATCC® is a trademark of the American Type Culture Collection.
You are authorized to use this product for research use only. It is not intended for human use.

