

Certificate of Analysis for HM-259D

Genomic DNA from *Treponema denticola*, Strain F0402

Catalog No. HM-259D

Product Description: Genomic DNA was extracted from a preparation of *Treponema denticola* (*T. denticola*), strain F0402.

Lot^{1,2}: 70016710

Manufacturing Date: 16NOV2018

TEST	SPECIFICATIONS	RESULTS
Genotypic Analysis Sequencing of 16S Ribosomal RNA Gene (1430 base pairs)	≥ 99% sequence identity to <i>T. denticola</i> , strain F0402 (GenBank: ADEC01000002.1)	99.9% sequence identity to <i>T. denticola</i> , strain F0402 (GenBank: ADEC01000002.1)
Agarose Gel Electrophoresis	High molecular weight chromosomal DNA	High molecular weight chromosomal DNA (Figure 1)
Concentration by PicoGreen® Measurement	0.7 to 1.5 µg in 25 to 100 µL per vial	1.0 µg in 37 µL per vial (27 µg/mL)
Amount per vial	0.7 to 1.5 µg	1.0 µg
Functional Activity by PCR Amplification 16S ribosomal RNA gene	~ 1500 base pair amplicon	~ 1500 base pair amplicon
OD₂₆₀/OD₂₈₀ Ratio	1.7 to 2.0	1.7
Bacterial Inactivation 10% of total yield inoculated in broth ^{3,4}	No viable bacteria detected	No viable bacteria detected

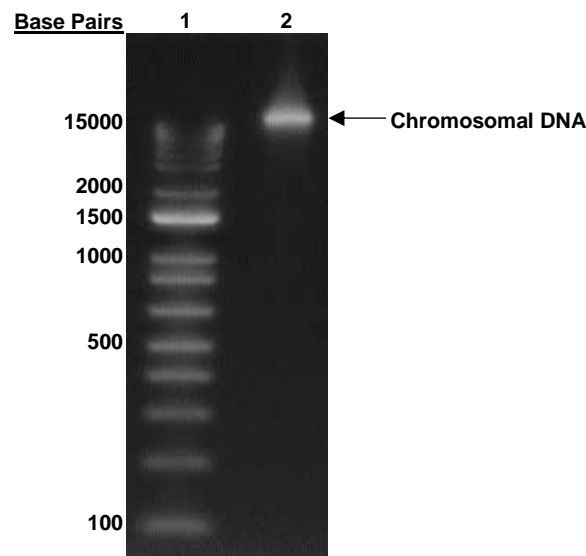
¹Quality control of HMP organisms used for DNA extraction is only performed to demonstrate that the material produced by BEI Resources is identical to the deposited material. It should not be considered a complete characterization of the deposited organism.

²The bacterial preparation used for extraction of genomic DNA was produced by culture of BEI Resources HM-259 lot 61202408. Genomic DNA was extracted using proprietary technology.

³14 days at 37°C in an anaerobic atmosphere (< 0.5% O₂; Remel™ Pack-Anaero™) in Modified New Oral Spirochete broth

⁴An extraction procedure was used that has been shown to consistently inactivate 100% of Gram-positive and Gram-negative bacteria.

Figure 1: Agarose Gel Electrophoresis



Lane 1: Invitrogen™ TrackIt™ 1 Kb Plus DNA Ladder
Lane 2: 200 ng of HM-259D

Certificate of Analysis for HM-259D

/Heather Couch/
Heather Couch

17 MAY 2019

Program Manager or designee, ATCC Federal Solutions

ATCC®, on behalf of BEI Resources, hereby represents and warrants that the material provided under this certificate has been subjected to the tests and procedures specified and that the results described, along with any other data provided in this certificate, are true and accurate to the best of ATCC®'s knowledge.

ATCC® is a trademark of the American Type Culture Collection.

You are authorized to use this product for research use only. It is not intended for human use.

