

***Mycobacterium leprae* Lipoarabinomannan (LAM)****Catalog No. NR-19348**

This reagent is the tangible property of the U.S. Government.

**Product Description:** NR-19348 is a preparation of lipoarabinomannan (LAM) derived from the cell wall of *Mycobacterium leprae* (*M. leprae*) extracted from a pool of infected armadillo liver and spleen tissue. LAM possesses many biological activities including immunogenicity, induction of TNF and the release of other cytokines, and inhibition of antigen processing. The nonreducing termini of LAM from *M. leprae* are not capped with mannose, unlike that of *M. tuberculosis* H37Rv.

**Lot: 70017941****Manufacturing Date: 15MAR2019**

Production and QC testing were performed by Colorado State University (CSU). The CSU documentation for lot 19.M.Lep.3.15.LAM is attached.

ATCC®, on behalf of BEI Resources, hereby represents and warrants that the material provided under this certificate has been subjected by the contractor to the tests and procedures specified and that the results described, along with any other data provided in this certificate, are true and accurate to the best of ATCC®'s knowledge.

ATCC® is a trademark of the American Type Culture Collection.

You are authorized to use this product for research use only. It is not intended for human use.



## WORK SHEET FOR LIPOARABINOMANNAN

### General Information

BEI Catalog Number: NR-19348  
CSU Lot Number: 19.Mlep.3.15.LAM  
Species: *Mycobacterium leprae*  
Strain: NHDP

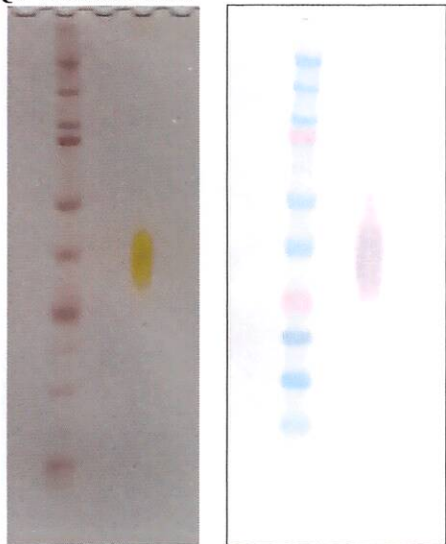
### Purification Information

Starting material (lot #): NHDP-63 Pool 12.18.2018  
Cell amount (wet weight): 201.34 mg  
Protocol used (SOP #): PP015.6, PP016.6, and PP017.3  
Date started: 1 / 18 / 2019  
Date completed: 3 / 15 / 2019  
Notebook; pages: Megan Lucas, BEI Production Notebook #4, pg 43-46 & 57-65  
Additional notes (if applicable): N/A

### Quality Control Information

NMR results: Pass Notebook and page(s): MCL, BEI Production #4, pg 62  
Endotoxin assay used: EndoZyme II  
Endotoxin amount: 0.08 ng/mg Notebook and page(s): MCL, BEI Production #4, pg 64  
Total amount of LAM: 12.4 mg Concentration (estimated by gel): 6.43 mg/ml  
Silver stain date: 3 / 11 / 2019 Notebook and page(s): MCL, BEI Production #4, pg 65  
Western blot date: 3 / 11 / 2019 Antibody used: CS-35 Notebook and page(s): MCL, BEI Production #4, pg 65

### QC Gel and Blot:



### Aliquot Information:

124 x 100 µg

M. L.  
(Research Associate)

3-21-19  
(date)

C. Schapp  
(Laboratory Supervisor)

3-22-19  
(date)