

Mycobacterium tuberculosis*, Strain H37Rv, Purified Peptidoglycan*Catalog No. NR-14853**

This reagent is the tangible property of the U.S. Government.

Product Description: NR-14853 is a preparation of the peptidoglycan derived from the cell wall of *Mycobacterium tuberculosis*, strain H37Rv.

Lot: 70017938**Manufacturing Date: 18FEB2019**

Production and QC testing were performed by Colorado State University (CSU). CSU documentation for lot 19.Rv.2.13.01.PG is attached.

ATCC®, on behalf of BEI Resources, hereby represents and warrants that the material provided under this certificate has been subjected by the contractor to the tests and procedures specified and that the results described, along with any other data provided in this certificate, are true and accurate to the best of ATCC®'s knowledge.

ATCC® is a trademark of the American Type Culture Collection.

You are authorized to use this product for research use only. It is not intended for human use.



WORK SHEET FOR PEPTIDOGLYCAN

General Information

BEI Catalog Number: NR-14853
CSU Lot Number: 19.Rv.2.13.01.PG
Fraction Type: Peptidoglycan
Species: *M. tuberculosis*
Strain: H37Rv

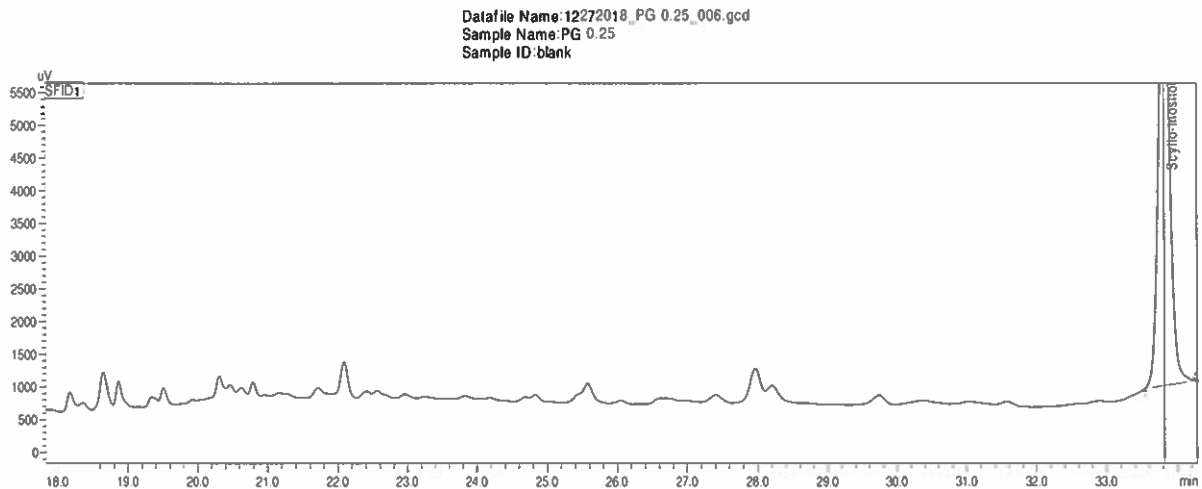
Purification Information

Starting material: mAGP Starting Material Lot #: 13.Rv.05.14.01.mAGP 280.7 g
Cells Irradiated: Yes Viability Test Performed: No Viable Organism Detected
Protocol used (SOP #'s): PP012.1, PP013.2, PP014, SP005, SP022.3, SP031, SP045.3
Date started: 12/13/18
Date completed: 2/18/19
Notebook; page(s): Native Cell Wall Materials dhII pp 68-70

Quality Control Information:

Total amount of arabinogalactan: 21.7 mg Date dried on Savant: 2/18/19
GC date: 1/21/19 Notebook and page(s): Native Cell Wall Materials dhII pp 71-75
Amino acid analysis date: 2/13/19

GC Spectrum:



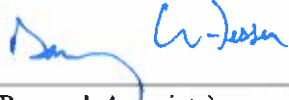
Aliquot Information:

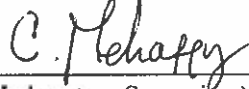
40 x 0.5 mg = 20.0 mg
1 x 1.7 mg = 1.7 mg
21.7 mg

Amino Acid	Mole of AA per Mole of Protein	% of each AA in Protein
asx	0.37	0.42
thr	1.56	1.57
ser	1.67	1.45
glx	38.84	50.14
gly	0.71	0.41
ala	17.94	12.76
val	0.51	0.50
DAP	12.10	23.02
ile	1.11	1.26
leu	0.75	0.85
tyr	0.62	1.00

total

94.13%

 5/30/19
 (Research Associate) date

 5/31/19
 (Laboratory Supervisor) date