

Genomic DNA from *Clostridioides difficile*, Isolate 6

Catalog No. NR-13597

Product Description: Genomic DNA was extracted from a preparation of *Clostridioides difficile* (*C. difficile*), isolate 6 which was isolated from a human patient from the Mid-Atlantic region of the United States in 2008/2009. Previously referred to as *Clostridium difficile*, this genus has been reclassified and the genus designation on the vial label refers to the old nomenclature.

Lot¹: 70006806

Manufacturing Date: 15JAN2018

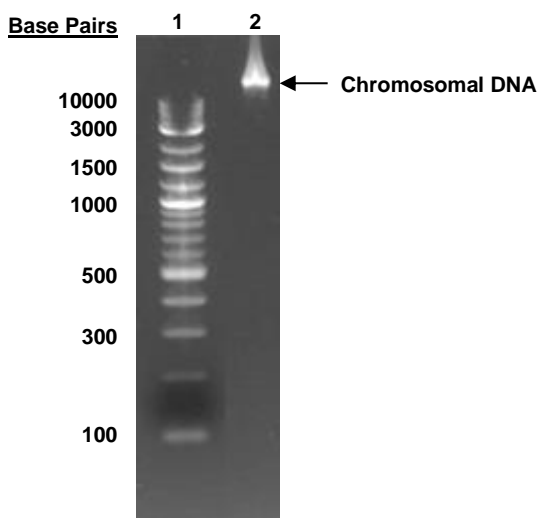
TEST	SPECIFICATIONS	RESULTS
Genotypic Analysis Sequencing of 16S ribosomal RNA gene (~ 1400 base pairs)	≥ 99% sequence identity to <i>C. difficile</i> type strain (GenBank: AB075770.1)	99.1% sequence identity to <i>C. difficile</i> type strain (GenBank: AB075770.1)
Agarose Gel Electrophoresis	High molecular weight chromosomal DNA	High molecular weight chromosomal DNA (Figure 1)
Concentration by PicoGreen[®] Measurement	0.7 to 1.5 µg in 25 to 100 µL per vial	0.9 µg in 25 µL per vial (36 µg/mL)
Amount per vial	0.7 to 1.5 µg	0.9 µg
Functional Activity by PCR Amplification 16S ribosomal RNA gene	~ 1500 base pair amplicon	~ 1500 base pair amplicon
OD₂₆₀/OD₂₈₀ Ratio	1.7 to 2.1	1.9
Bacterial Inactivation 10% of total yield plated on agar ^{2,3}	No viable bacteria detected	No viable bacteria detected

¹The bacterial preparation used for extraction of genomic DNA was produced by culture of NR-13432 lot 59147484. Genomic DNA was extracted using proprietary technology.

²14 days at 37°C in an anaerobic atmosphere (< 5% O₂; Remel™ Pack-Anaero™) on Tryptic Soy agar with 5% defibrinated sheep blood

³An extraction procedure was used that has been shown to consistently inactivate 100% of Gram-positive and Gram-negative bacteria.

Figure 1: Agarose Gel Electrophoresis



Lane 1: New England Biolabs[®] Quick-Load[®] 1 Kb Plus DNA Ladder
 Lane 2: ~ 200 ng of NR-13597

/Heather Couch/

Heather Couch

04 JUN 2019

Program Manager or designee, ATCC Federal Solutions

ATCC®, on behalf of BEI Resources, hereby represents and warrants that the material provided under this certificate has been subjected to the tests and procedures specified and that the results described, along with any other data provided in this certificate, are true and accurate to the best of ATCC®'s knowledge.

ATCC® is a trademark of the American Type Culture Collection.

You are authorized to use this product for research use only. It is not intended for human use.

