

***Staphylococcus epidermidis*, Strain SK135**

**Catalog No. HM-118**

**Product Description:** *Staphylococcus epidermidis* (*S. epidermidis*), strain SK135 was isolated from normal skin of the right arm of a 57-year-old man.

**Lot<sup>1,2</sup>: 70025887**

**Manufacturing Date: 22MAY2019**

TEST	SPECIFICATIONS	RESULTS
<b>Phenotypic Analysis</b> Cellular morphology Colony morphology <sup>3</sup>  Motility (wet mount)	Gram-positive cocci Report results  Report results	Gram-positive cocci Circular, convex, entire, smooth and cream (Figure 1) Non-motile
<b>Genotypic Analysis</b> Sequencing of 16S ribosomal RNA gene (~ 1480 base pairs)	≥ 99% sequence identity to <i>S. epidermidis</i> , strain SK135 (GenBank: ADEY01000016)	99.9% sequence identity to <i>S. epidermidis</i> , strain SK135 (GenBank: ADEY01000016) <sup>4</sup>
<b>Purity (post-freeze)<sup>5</sup></b>	Consistent with expected colony morphology	Consistent with expected colony morphology
<b>Viability (post-freeze)<sup>3</sup></b>	Growth	Growth

<sup>1</sup>Quality control of HMP material is only performed to demonstrate that the material distributed by BEI Resources is identical to the deposited material. It should not be considered a complete characterization of the deposited organism.

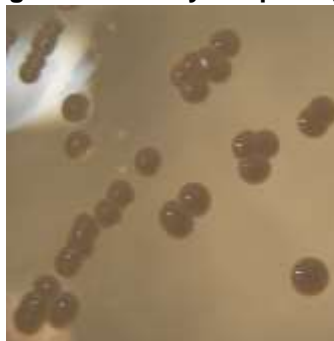
<sup>2</sup>*S. epidermidis*, strain SK135 was deposited by Guillermo I. Perez-Perez, D.Sc., Associate Professor of Medicine, Departments of Medicine and Microbiology, School of Medicine, New York University, New York, New York, USA. HM-118 lot 70025887 was produced by inoculation of BEI Resources HMS-118 lot 59265319 into Brain Heart Infusion broth and grown 1 day at 37°C in an aerobic atmosphere. Broth inoculum was added to Brain Heart Infusion agar kolles which were grown 1 day at 37°C in an aerobic atmosphere to produce this lot.

<sup>3</sup>1 day at 37°C in an aerobic atmosphere on Brain Heart Infusion agar

<sup>4</sup>Also consistent with other *Staphylococcus* species

<sup>5</sup>Purity of this lot was assessed for 7 days at 37°C in an aerobic atmosphere with and without 5% CO<sub>2</sub> on Brain Heart Infusion agar.

**Figure 1: Colony Morphology**



/Heather Couch/  
Heather Couch

Program Manager or designee, ATCC Federal Solutions

28 JUN 2019

ATCC®, on behalf of BEI Resources, hereby represents and warrants that the material provided under this certificate has been subjected to the tests and procedures specified and that the results described, along with any other data provided in this certificate, are true and accurate to the best of ATCC®'s knowledge.

ATCC® is a trademark of the American Type Culture Collection. You are authorized to use this product for research use only. It is not intended for human use.



**BEI Resources**  
[www.beiresources.org](http://www.beiresources.org)

E-mail: [contact@beiresources.org](mailto:contact@beiresources.org)  
Tel: 800-359-7370  
Fax: 703-365-2898