

Genomic DNA from *Plasmodium falciparum*, Strain K1

Catalog No. MRA-159G

This reagent is the tangible property of the U.S. Government.

Product Description: Genomic DNA was extracted from a preparation of *Plasmodium falciparum* (*P. falciparum*), strain K1.

Lot¹⁻³: 63523743

Manufacturing Date: 22JUN2015

TEST	SPECIFICATIONS	RESULTS
Sequencing of Merozoite Surface Protein 2 (MSP2) Gene (~ 540 base pairs)	≥ 99% sequence identity to <i>P. falciparum</i> , strain K1 (GenBank: ABGV01000272)	100% sequence identity to <i>P. falciparum</i> , strain K1 (GenBank: ABGV01000272)
Agarose Gel Electrophoresis	High molecular weight chromosomal DNA	High molecular weight chromosomal DNA (Figure 1)
Concentration by NanoDrop Measurement	Report results	~ 0.5 µg in 50 µL per vial (10 µg/mL)
Amount per Vial	Report results	~ 0.5 µg
Functional Activity by PCR Amplification MSP2 locus⁴	~ 600-900 base pair amplicon	~ 900 base pair amplicon
OD₂₆₀/OD₂₈₀ Ratio	1.6 to 2.1	2.1
Protozoan Inactivation Human erythrocytes exposed to 10% of total yield of MRA-159G ^{5,6}	No parasitemia observed	No parasitemia observed
Mycoplasma Contamination DNA Detection by PCR	None detected	None detected

¹MRA-159G was produced from a cell culture of BEI Resources MR-MRA-159 lot 58278723. Genomic DNA was extracted using proprietary technology.

²MRA-159G lot 63523743 was vialled in TE buffer (10 mM Tris-HCl and 0.5 mM EDTA, pH 9).

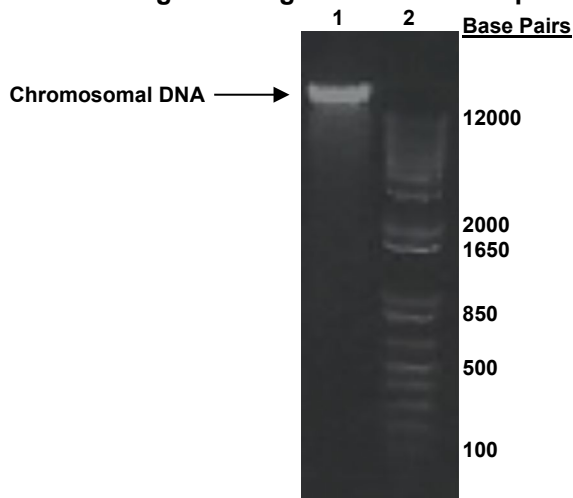
³Testing was completed on bulk material prior to freezing.

⁴Primer sequences and conditions for PCR are available upon request.

⁵14 days in complete RPMI culture medium at 37°C in sealed flasks outgassed with blood-gas atmosphere (90% N₂, 5% CO₂, 5% O₂). Complete RPMI culture medium was changed and parasitemia checked every 2 to 3 days.

⁶An extraction procedure was used that has been shown to consistently inactivate 100% of *Plasmodium* parasites.

Figure 1: Agarose Gel Electrophoresis



Lane 1: ~ 1080 ng of MRA-159G
Lane 2: Invitrogen™ TrackIt™ 1 Kb Plus DNA Ladder

/Heather Couch/
Heather Couch

12 JUN 2019

Program Manager or designee, ATCC Federal Solutions

ATCC®, on behalf of BEI Resources, hereby represents and warrants that the material provided under this certificate has been subjected to the tests and procedures specified and that the results described, along with any other data provided in this certificate, are true and accurate to the best of ATCC®'s knowledge.

ATCC® is a trademark of the American Type Culture Collection.
You are authorized to use this product for research use only. It is not intended for human use.

