

Genomic DNA from *Brucella suis*, Strain 40

Catalog No. NR-9957

Product Description: Genomic DNA was extracted from a preparation of *Brucella suis* (*B. suis*), strain 40, biovar 4. *B. suis*, strain 40 is a reference strain for biotype 4.

Lot¹: 64364112

Manufacturing Date: 24JUN2016

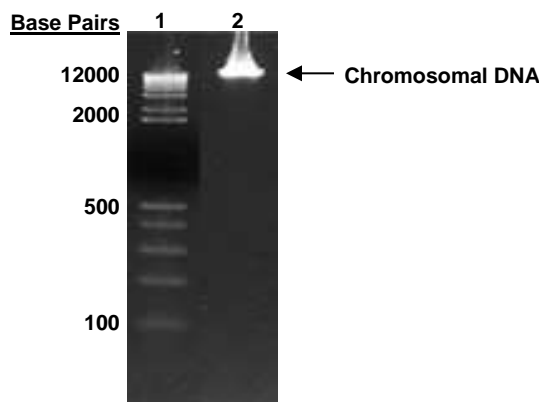
TEST	SPECIFICATIONS	RESULTS
Genotypic Analysis Sequencing of 16S ribosomal RNA gene (~ 710 base pairs)	≥ 99% sequence identity to <i>B. suis</i> , strain 40 (GenBank: ACJK01000036.1; ACJK01000040.1)	100% sequence identity to <i>B. suis</i> , strain 40 (GenBank: ACJK01000036.1; ACJK01000040.1) ²
Agarose Gel Electrophoresis	High molecular weight chromosomal DNA	High molecular weight chromosomal DNA (Figure 1)
Concentration by PicoGreen[®] Measurement	0.7 to 1.5 µg in 25 to 100 µL per vial	1.0 µg in 28 µL per vial (35 µg/mL)
Amount per vial	0.7 to 1.5 µg	1.0 µg
Functional Activity by PCR Amplification 16S ribosomal RNA gene	~ 1500 base pair amplicon	~ 1500 base pair amplicon
OD₂₆₀/OD₂₈₀ Ratio	1.7 to 2.1	1.8
Bacterial Inactivation 10% of total yield plated on agar for 14 days ³	No viable bacteria detected	No viable bacteria detected

¹The bacterial preparation used for extraction of genomic DNA was produced by culture of BEI Resources NR-305 lot 64364108. Genomic DNA was extracted using proprietary technology.

²Also consistent with other *Brucella* species

³An extraction procedure was used that has been shown to consistently inactivate 100% of Gram-negative and Gram-positive bacteria.

Figure 1: Agarose Gel Electrophoresis



Lane 1: Invitrogen™ TrackIt™ 1 Kb Plus DNA Ladder
Lane 2: ~ 200 ng of NR-9957

/Heather Couch/

Heather Couch

10 JUL 2019

Program Manager or designee, ATCC Federal Solutions

ATCC®, on behalf of BEI Resources, hereby represents and warrants that the material provided under this certificate has been subjected to the tests and procedures specified and that the results described, along with any other data provided in this certificate, are true and accurate to the best of ATCC®'s knowledge.

ATCC® is a trademark of the American Type Culture Collection.

You are authorized to use this product for research use only. It is not intended for human use.

