

Genomic DNA from *Yersinia pestis*, Strain CO92

Catalog No. NR-2717

This reagent is the property of the U.S. Government.

Product Description: NR-2717 contains genomic DNA extracted from a preparation of *Yersinia pestis* (*Y. pestis*), strain CO92, biovar Orientalis.

Lot¹: 70018687

Manufacturing Date: 24SEP2018

TEST	SPECIFICATIONS	RESULTS
Genotypic Analysis Sequencing of 16S ribosomal RNA gene (~ 1460 base pairs)	≥ 99% sequence identity to <i>Y. pestis</i> strain CO92 (GenBank: AL590842.1)	100% sequence identity to <i>Y. pestis</i> strain CO92 (GenBank: AL590842.1) ²
PCR Amplification of <i>Y. pestis</i> specific chromosomal region³	~ 800 base pair amplicon	~ 800 base pair amplicon
Presence of Plasmids Confirmed by PCR Amplification³ pMT1/pFra pCD1/pYV pPCP1/pPla/pPst	~ 1200 base pair amplicon ~ 1900 base pair amplicon ~ 400 base pair amplicon	~ 1200 base pair amplicon ~ 1900 base pair amplicon ~ 400 base pair amplicon
Agarose Gel Electrophoresis	High molecular weight chromosomal DNA	High molecular weight chromosomal DNA (Figure 1)
Concentration by PicoGreen[®] Measurement	0.7 to 1.5 µg in 25 to 100 µL per vial	1.1 µg in 31 µL per vial (36 µg/mL)
Amount per vial	0.7 to 1.5 µg	1.1 µg
Functional Activity by PCR Amplification 16S ribosomal RNA gene	~ 1500 base pair amplicon	~ 1500 base pair amplicon
OD₂₆₀/OD₂₈₀ Ratio	1.7 to 2.1	1.9
Bacterial Inactivation 10% of total yield plated on agar ⁴	No viable bacteria detected	No viable bacteria detected

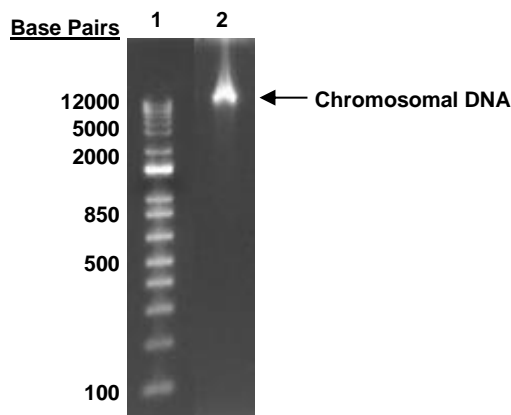
¹The bacterial preparation used for extraction of genomic DNA was produced by culture of BEI Resources NR-641 lot 4464636. Genomic DNA was extracted using proprietary technology.

²Also consistent with other *Yersinia* species

³PCR was performed on NR-2717 lot 59176099, which was produced from the same seed lot of organism (NR-641 lot 4464636).

⁴An extraction procedure was used that has been shown to consistently inactivate 100% of Gram-negative and Gram-positive bacteria.

Figure 1: Agarose Gel Electrophoresis



Lane 1: Invitrogen™ TrackIt™ 1 Kb Plus DNA Ladder
 Lane 2: ~ 200 ng of NR-2717

/Heather Couch/
 Heather Couch

11 JUL 2019

Program Manager or designee, ATCC Federal Solutions

ATCC®, on behalf of BEI Resources, hereby represents and warrants that the material provided under this certificate has been subjected to the tests and procedures specified and that the results described, along with any other data provided in this certificate, are true and accurate to the best of ATCC®'s knowledge.

ATCC® is a trademark of the American Type Culture Collection.
 You are authorized to use this product for research use only. It is not intended for human use.

