

***Mycobacterium leprae* Cytosol Fraction (MLSA)**

Catalog No. NR-19330

This reagent is the tangible property of the U.S. Government.

Product Description: NR-19330 was produced from purified *Mycobacterium leprae* (*M. leprae*) whole cells (non-irradiated, non-autoclaved) extracted from a pool of infected armadillo liver and spleen tissue.

Lot¹: 70024209

Manufacturing Date: 01DEC2011

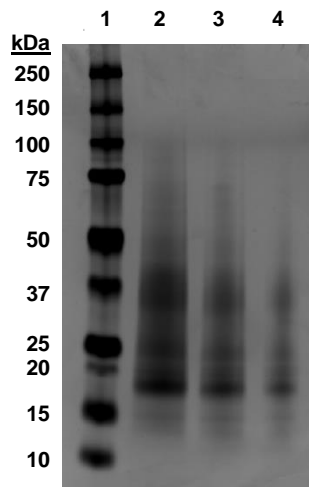
TEST	SPECIFICATIONS	RESULTS
SDS-PAGE and Silver Stain	Report results	Visible smear of cell wall proteins (Figure 1)
Concentration by Bicinchoninic Acid Protein Assay²	Report results	1.94 µg per µL
Final Product Quantity per vial Volume per vial	~ 250 mg Report results	~ 250 mg ~ 130 µL
Western Blot Analysis Monoclonal anti-GroES ³	Reactive	Reactive (Figure 2)

¹Production was performed by Colorado State University (CSU) and provided as a bulk lot. NRC-19330 bulk lot *M.lep*MLSA.Batch#102.12.01.2011 was rehydrated in Dulbecco's phosphate buffered saline and aliquoted by BEI Resources on 30APR2019 as NR-19330 lot 70024209, and lyophilized. Testing by BEI Resources was performed on NR-19330 lot 70024209 after vialing and lyophilization. The CSU documentation for bulk lot *M.lep*MLSA.Batch#102.12.01.2011 is attached.

²Using BSA as a standard

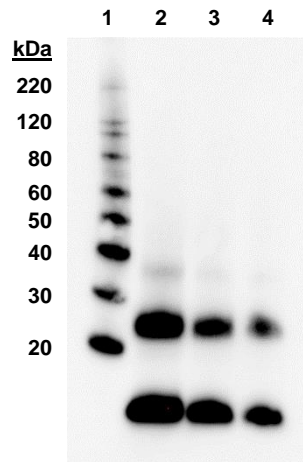
³*M. leprae* anti-GroES (major cytoplasmic protein) monoclonal antibody (BEI Resources, NR-19364) (1:20 dilution)

Figure 1: SDS-PAGE and Silver Stain



Lane 1: Precision Plus Protein™ Standard
 Lane 2: NR-19330 lot 70024209, 4 µg
 Lane 3: NR-19330 lot 70024209, 2 µg
 Lane 4: NR-19330 lot 70024209, 1 µg

Figure 2: Western Blot with Monoclonal Anti-GroES



Lane 1: MagicMark™ XP Protein Standard
 Lane 2: NR-19330 (4 µg) with anti-GroES
 Lane 3: NR-19330 (2 µg) with anti-GroES
 Lane 4: NR-19330 (1 µg) with anti-GroES

/Heather Couch/

Heather Couch

Program Manager or designee, ATCC Federal Solutions

05 JUL 2019

ATCC®, on behalf of BEI Resources, hereby represents and warrants that the material provided under this certificate has been subjected to the tests and procedures specified and that the results described, along with any other data provided in this certificate, are true and accurate to the best of ATCC®'s knowledge.

ATCC® is a trademark of the American Type Culture Collection.

You are authorized to use this product for research use only. It is not intended for human use.



QC SHEET FOR *M. LEPRAE* MLSA CYTOSOL PROTEIN

General Information

Product Lot Number: *M. lep* MLSA.Batch#102.12.01.2011
Catalog Number: NRC-19330 BEI Lot number 60505532
Species: *Mycobacterium leprae*
Strain: NHDP-55

Cell prep pool:

Armadillo	5L116	spleen	NHDP-55	harvested	01.29.2010	49.3 mg
Armadillo	4G31	liver	NHDP-55	harvested	05.26.2010	9.4 mg
Armadillo	4G31	liver	NHDP-55	harvested	06.02.2010	9.8 mg
Armadillo	3X128	liver	NHDP-55	harvested	02.04.2011	10.7 mg
Armadillo	3T50	liver	NHDP-55	harvested	02.16.2011	8.1 mg
Armadillo	3T50	liver	NHDP-55	harvested	02.23.2011	10.4 mg
Armadillo	3X129	liver	NHDP-55	harvested	04.01.2011	30.6 mg
Armadillo	3X125	liver	NHDP-55	harvested	04.06.2011	16.4 mg
Armadillo	3X128	liver	NHDP-55	harvested	04.08.2011	14.3 mg
Armadillo	3X105	liver	NHDP-55	harvested	04.13.2011	6.6 mg
Armadillo	3X105	liver	NHDP-55	harvested	04.15.2011	27.6 mg
Armadillo	3X125	liver	NHDP-55	harvested	04.20.2011	16.8 mg
Armadillo	3X125	liver	NHDP-55	harvested	04.22.2011	8.5 mg
Armadillo	3X125	liver	NHDP-55	harvested	08.19.2011	9.5 mg
Armadillo	3X128	liver	NHDP-55	harvested	08.24.2011	6.4 mg

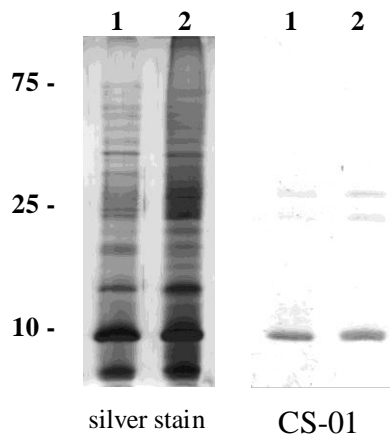
Sonication and Fractionation Information

Starting material (lot #): Batch #102
Cell amount (wet weight): 234.4 mg whole cells
SOP #: subcellular fractionation protocol Notebook pages: JNK Book#2 pg 95
Date of Probe Sonication: 12/01/11 Buffer used: PBS
Centrifugation Notes 27,000 x g spin to obtain supernatant (cytosol plus membrane); 75,000 x g spin of this to obtain supernatant fraction (MLSA)


Quality Control Information


Clarity of product: clear, slightly yellow
BCA: 2.9 µg/µl Notebook and page(s): JNK notebook #2 pp. 96-97
Total volume: 6.5 ml Total amount of Protein: 18.8 mg
Silver Stain Date: 12/07/11 Western blot: 1.25 µg MLSA per lane, CS-01 (mAb to GroES, ML0380), 1:20 culture supernatant. Lane 1, MLSA Batch 79 standard; lane 2, MLSA Batch 102

QC Gel and Western blot:



Aliquot Information: 2.5mg x 7 vials lyophilized


Produced 01/11/12


Lab Supervisor 01/11/12