

***Klebsiella pneumoniae* subsp. *pneumoniae*, Strain WGLW1**

**Catalog No. HM-750**

**Product Description:**

*Klebsiella pneumoniae* (*K. pneumoniae*) subsp. *pneumoniae*, strain WGLW1 was isolated from human urine in Massachusetts, USA.

**Lot: 70014965<sup>1,2</sup>**

**Manufacturing Date: 26MAY2019**

TEST	SPECIFICATIONS	RESULTS
<b>Phenotypic Analysis</b> Cellular morphology Colony morphology <sup>3</sup>  Motility	Gram-negative rods Report results  Report results	Gram-negative rods Circular, convex, entire, smooth, mucoid and cream (Figure 1)  Non-motile
<b>Genotypic Analysis</b> Sequencing of 16S ribosomal RNA gene (~ 1470 base pairs)	≥ 99% sequence identity to <i>K. pneumoniae</i> subsp. <i>pneumoniae</i> , strain WGLW1 (GenBank: AMLL01000001.1)	99.4% sequence identity to <i>K. pneumoniae</i> subsp. <i>pneumoniae</i> , strain WGLW1 (GenBank: AMLL01000001.1) <sup>4</sup>
<b>Purity (post-freeze)<sup>5</sup></b>	Consistent with expected colony morphology	Consistent with expected colony morphology
<b>Viability (post-freeze)<sup>3</sup></b>	Growth	Growth

<sup>1</sup>Quality control of HMP material is only performed to demonstrate that the material distributed by BEI Resources is identical to the deposited material. It should not be considered a complete characterization of the deposited organism.

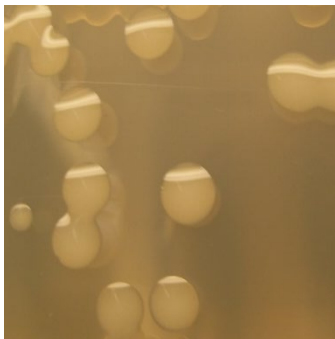
<sup>2</sup>*K. pneumoniae* subsp. *pneumoniae*, strain WGLW1 was deposited by Wendy S. Garrett, M.D., Ph.D., Assistant Professor, and Leslie H. Wardwell, Department of Immunology and Infectious Diseases, Harvard School of Public Health, Boston, Massachusetts, USA. HM-750 lot 70014965 was produced by inoculation of BEI Resources HMS-750 lot 61859929 into Nutrient broth and incubated for 1 day at 37°C in an aerobic atmosphere. Broth inoculum was added to Nutrient agar kolles, which were grown for 1 day at 37°C in an aerobic atmosphere to produce this lot.

<sup>3</sup>1 day at 37°C in an aerobic atmosphere on Nutrient agar

<sup>4</sup>Also consistent with other *Klebsiella* species

<sup>5</sup>Purity of this lot was assessed for 7 days at 37°C in an aerobic atmosphere with 5% CO<sub>2</sub> on Tryptic Soy agar with 5% defibrinated sheep blood.

**Figure 1: Colony Morphology**



/Heather Couch/

Heather Couch

16 AUG 2019

Program Manager or designee, ATCC Federal Solutions

ATCC<sup>®</sup>, on behalf of BEI Resources, hereby represents and warrants that the material provided under this certificate has been subjected to the tests and procedures specified and that the results described, along with any other data provided in this certificate, are true and accurate to the best of ATCC<sup>®</sup>'s knowledge.

ATCC<sup>®</sup> is a trademark of the American Type Culture Collection.

You are authorized to use this product for research use only. It is not intended for human use.

