

Plasmodium falciparum* Erythrocyte Binding Antigen-175 RII-Non-Glycosylated Protein, Recombinant from *Pichia pastoris

Catalog No. MRA-1162

This reagent is the tangible property of the U.S. Government.

Product Description:

Recombinant *Plasmodium falciparum* (*P. falciparum*) erythrocyte binding antigen (EBA)-175 RII-non-glycosylated (NG) protein was expressed as a secreted protein and purified from *Pichia pastoris*, strain X33.

Lot: 61875552

Manufacturing Date: 11APR2003¹

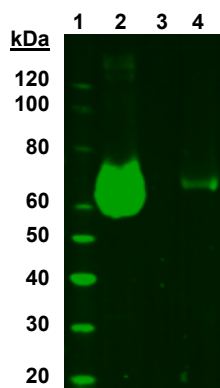
TEST	SPECIFICATIONS	RESULTS
Appearance	Clear and colorless, no particulate matter	Clear and colorless, no particulate matter
SDS-PAGE Analysis²	Protein band of interest represents > 90% of total staining intensity	Dominant band of ~ 64 kDa accounting for 93% of total staining intensity
Concentration by UV Absorbance at 280 nm²	Report results	1.72 mg per mL
Final Product Quantity per vial Volume per vial	Report results Report results	0.516 mg 0.3 mL
Identification by Western Blot Monoclonal anti-EBA-175 ³	Reactive	Reactive (Figure 1)
Endotoxin Content² (Limulus Amoebocyte Lysate Assay)	Report results	< 0.5 EU per mL
Filtration	0.2 µm sterile-filtered	0.2 µm sterile-filtered

¹MRA-1162 lot 61875552 was re-vialed on 19AUG2013.

²Purity, concentration and endotoxin content were determined prior to deposit; see, Peek, L. J., et al. "A Systematic Approach to Stabilizing EBA-175 RII-NG for Use as a Malaria Vaccine." *Vaccine* 24 (2006): 5839-5851. PubMed: 16735084.

³Using a 1:1000 dilution of monoclonal antibody R218 (BEI Resources MRA-712A) as a primary antibody and a 1:10000 dilution of goat anti-mouse IRDye conjugate as a secondary antibody

Figure 1: Western Blot Analysis



Lane 1 – Invitrogen™ MagicMark™ XP Western Protein Standard
 Lane 2 – MRA-1162 (EBA-175 RII NG), non-reducing
 Lane 3 – MRA-102 *P. falciparum* 3D7 blood stage, whole cell extract 8 µL
 Lane 4 – MRA-1162 (EBA-175 RII NG), reducing

/Heather Couch/

Heather Couch

20 AUG 2019

Program Manager or designee, ATCC Federal Solutions

ATCC[®], on behalf of BEI Resources, hereby represents and warrants that the material provided under this certificate has been subjected by ATCC[®] and the contractor to the tests and procedures specified and that the results described, along with any other data provided in this certificate, are true and accurate to the best of ATCC[®]'s knowledge.

ATCC[®] is a trademark of the American Type Culture Collection.

You are authorized to use this product for research use only. It is not intended for human use.

