

***Streptococcus anginosus*, Strain F0211**

Catalog No. HM-282

Product Description:

Streptococcus anginosus (*S. anginosus*), strain F0211 was isolated from human airways.

Lot: 70027408^{1,2}

Manufacturing Date: 19JUL2019

TEST	SPECIFICATIONS	RESULTS
Phenotypic Analysis Cellular morphology Colony morphology ³ Motility	Gram-positive cocci Report results Report results	Gram-positive cocci Circular, convex, entire, smooth and cream (Figure 1) Non-motile
Genotypic Analysis Sequencing of 16S ribosomal RNA gene (~ 1440 base pairs)	≥ 99% sequence identity to <i>S. anginosus</i> , strain F0211 (GenBank: AECT01000011.1)	100% sequence identity to <i>S. anginosus</i> , strain F0211 (GenBank: AECT01000011.1)
Purity (post-freeze)⁴	Consistent with expected colony morphology	Consistent with expected colony morphology
Viability (post-freeze)³	Growth	Growth

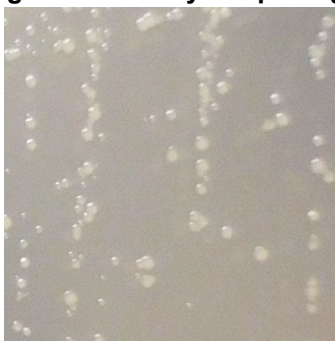
¹Quality control of HMP material is only performed to demonstrate that the material distributed by BEI Resources is identical to the deposited material. It should not be considered a complete characterization of the deposited organism.

²*S. anginosus*, strain F0211 was deposited by Jacques Izard, Ph.D., Assistant Member of the Staff, Department of Molecular Genetics, The Forsyth Institute, Boston, Massachusetts, USA. HM-282 lot 70027408 was produced by the inoculation of BEI Resources HMS-282 lot 59476580 into Tryptic Soy broth and incubated for 1 day at 37°C in an aerobic atmosphere with 5% CO₂. Broth inoculum was added to Tryptic Soy agar kolles which were grown 1 day at 37°C in an aerobic atmosphere with 5% CO₂ to produce this lot.

³1 day at 37°C in an aerobic atmosphere with 5% CO₂ on Tryptic Soy agar

⁴Purity of this lot was assessed for 7 days at 37°C in an aerobic atmosphere with 5% CO₂ on Tryptic Soy agar with 5% defibrinated sheep blood.

Figure 1: Colony Morphology



/Heather Couch/
Heather Couch

Program Manager or designee, ATCC Federal Solutions

27 AUG 2019

ATCC®, on behalf of BEI Resources, hereby represents and warrants that the material provided under this certificate has been subjected to the tests and procedures specified and that the results described, along with any other data provided in this certificate, are true and accurate to the best of ATCC®'s knowledge.

ATCC® is a trademark of the American Type Culture Collection.

You are authorized to use this product for research use only. It is not intended for human use.

