

Genomic DNA from *Citrobacter portucalensis*, Strain 4_7_47CFAA

Catalog No. HM-299D

Product Description:

Genomic DNA was extracted from a preparation of *Citrobacter portucalensis* (*C. portucalensis*), strain 4_7_47CFAA. **Note:** Strain 4_7_47CFAA was previously classified as *Citrobacter freundii*.

Lot: 59925956^{1,2}

Manufacturing Date: 30AUG2011

TEST	SPECIFICATIONS	RESULTS
Sequencing of 16S ribosomal RNA gene (~ 1060 base pairs)	≥ 99% sequence identity to GenBank: ADLG01000001 (<i>C. portucalensis</i> , strain 4_7_47CFAA)	≥ 99% sequence identity to GenBank: ADLG01000001 (<i>C. portucalensis</i> , strain 4_7_47CFAA)
Agarose Gel Electrophoresis	High molecular weight chromosomal DNA	High molecular weight chromosomal DNA (Figure 1)
Concentration by PicoGreen® Measurement	0.7 to 1.5 µg in 25 to 100 µL per vial	0.98 µg in 25 µL per vial (39 µg/mL)
Amount per Vial	0.7 to 1.5 µg	0.98 µg
Functional Activity by PCR Amplification 16S ribosomal RNA gene	~ 1500 base pair amplicon	~ 1500 base pair amplicon
OD ₂₆₀ /OD ₂₈₀ Ratio	1.7 to 2.0	2.0
Bacterial Inactivation 10% of total yield plated on agar ^{3,4}	No viable bacteria detected	No viable bacteria detected

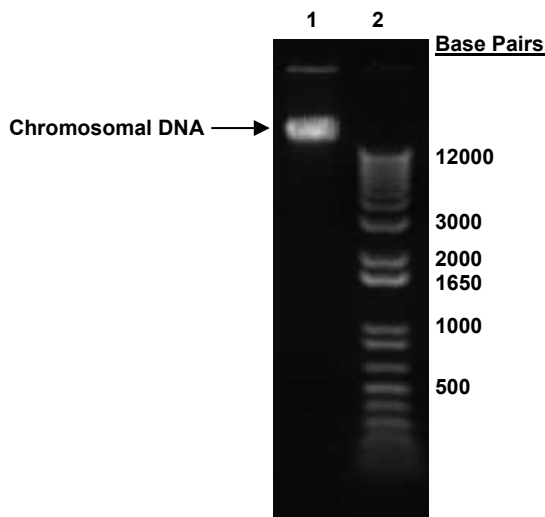
¹Quality control of HMP organisms used for DNA extraction is only performed to demonstrate that the material produced by BEI Resources is identical to the deposited material. It should not be considered a complete characterization of the deposited organism.

²The bacterial preparation used for extraction of genomic DNA was produced by culture of the deposited material. Genomic DNA was extracted using proprietary technology.

³7 days at 37°C in an anaerobic atmosphere on Tryptic Soy agar with 5% defibrinated sheep blood

⁴An extraction procedure was used that has been shown to consistently inactivate 100% of Gram-positive and Gram-negative bacteria.

Figure 1: Agarose Gel Electrophoresis



Lane 1: 200 ng of HM-299D

Lane 2: Invitrogen™ TrackIt™ 1 Kb Plus DNA Ladder

/Heather Couch/

Heather Couch

23 JUL 2019

Program Manager or designee, ATCC Federal Solutions

ATCC®, on behalf of BEI Resources, hereby represents and warrants that the material provided under this certificate has been subjected by ATCC® to the tests and procedures specified and that the results described, along with any other data provided in this certificate, are true and accurate to the best of ATCC®'s knowledge.

ATCC® is a trademark of the American Type Culture Collection.

You are authorized to use this product for research use only. It is not intended for human use.

