

**Monoclonal Anti-Shiga-Like Toxin 2 Subunit A, Clone 11E10 (produced *in vitro*)**

**Catalog No. NR-45117**

This reagent is the tangible property of the U.S. Government.

**Product Description:**

Antibody Class: IgG1k

Monoclonal antibody prepared against the A subunit of Shiga-like toxin 2 from *Escherichia coli* was purified from clone 11E10 (ATCC® CRL-1907™) hybridoma supernatant by protein G affinity chromatography.

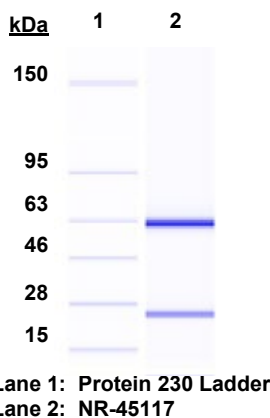
**Lot: 70022556<sup>1</sup>**

**Manufacturing Date: 29MAR2019**

TEST	SPECIFICATIONS	RESULTS
Antibody Class Determination	IgG1k	IgG1k
Agilent® Protein 230 Analysis	Correct molecular weight for heavy and light chains; Report purity	Correct molecular weight for heavy and light chains (Figure 1); 99.6% pure
Concentration by Spectrophotometer at OD <sub>280</sub>	~ 1 mg per mL	1.23 mg per mL
Sterility	0.22 µm filter-sterilized	0.22 µm filter-sterilized

<sup>1</sup>Mouse monoclonal antibody was purified using protein G affinity chromatography from supernatants obtained from mouse hybridoma clone 11E10 adapted to serum-free media.

**Figure 1: Agilent® Protein 230 Analysis**



/Heather Couch/  
Heather Couch

20 SEP 2019

Program Manager or designee, ATCC Federal Solutions

ATCC®, on behalf of BEI Resources, hereby represents and warrants that the material provided under this certificate has been subjected to the tests and procedures specified and that the results described, along with any other data provided in this certificate, are true and accurate to the best of ATCC®'s knowledge.

ATCC® is a trademark of the American Type Culture Collection.

You are authorized to use this product for research use only. It is not intended for human use.

