

***Citrobacter portucalensis*, Strain 4_7_47CFAA**

Catalog No. HM-299

Product Description:

Citrobacter portucalensis (*C. portucalensis*), strain 4_7_47CFAA was isolated in 2007 from inflamed biopsy tissue taken from the sigmoid colon of a 25-year-old female patient with Crohn's disease in Calgary, Alberta, Canada. **Note:** Strain 4_7_47CFAA was previously classified as *Citrobacter freundii*.

Lot: 59925955^{1,2}

Manufacturing Date: 08JUL2011

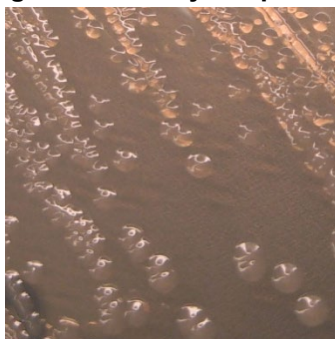
TEST	SPECIFICATIONS	RESULTS
Phenotypic Analysis Cellular morphology Colony morphology ³	Report results Report results	Gram-negative rods Circular, peaked, entire, translucent, gray and smooth (Figure 1)
Genotypic Analysis Sequencing of 16S ribosomal RNA gene (~ 1480 base pairs)	≥ 99% identical to GenBank: ADLG01000001 (<i>C. portucalensis</i> , strain 4_7_47CFAA)	≥ 99% identical to GenBank: ADLG01000001 (<i>C. portucalensis</i> , strain 4_7_47CFAA)
Viability (post-freeze)³	Growth	Growth

¹Quality control of HMP material is only performed to demonstrate that the material distributed by BEI Resources is identical to the deposited material. It should not be considered a complete characterization of the deposited organism.

²*C. portucalensis*, strain 4_7_47CFAA was deposited by Assistant Professor Emma Allen-Vercoe, Department of Molecular and Cellular Biology, University of Guelph, Guelph, Ontario, Canada. The deposited material was inoculated into Nutrient broth (ATCC medium 3) and incubated for 1 day at 37°C in an aerobic atmosphere. Broth was then added to Kolles and incubated for 1 day at 37°C in an aerobic atmosphere to produce this lot.

³1 day at 37°C in an aerobic atmosphere on Nutrient agar

Figure 1: Colony Morphology



/Heather Couch/
Heather Couch

Program Manager or designee, ATCC Federal Solutions

03 OCT 2019

ATCC®, on behalf of BEI Resources, hereby represents and warrants that the material provided under this certificate has been subjected to the tests and procedures specified and that the results described, along with any other data provided in this certificate, are true and accurate to the best of ATCC®'s knowledge.

ATCC® is a trademark of the American Type Culture Collection. You are authorized to use this product for research use only. It is not intended for human use.

