

**Monoclonal Anti-*Mycobacterium tuberculosis* GroES (Gene Rv3418c), Clone IT-3 (SA-12)  
(produced *in vitro*)**

**Catalog No. NR-49223**

This reagent is the tangible property of the U.S. Government.

**Product Description:**

Antibody Class: IgG2ak

Antibody Designation (Original Designation): IT-3 (SA-12)

Monoclonal antibody to *Mycobacterium tuberculosis*, strain H37Rv chaperonin protein (GroES) was produced in cell culture using a B cell hybridoma generated by the fusion of myeloma cells with immunized mouse splenocytes.

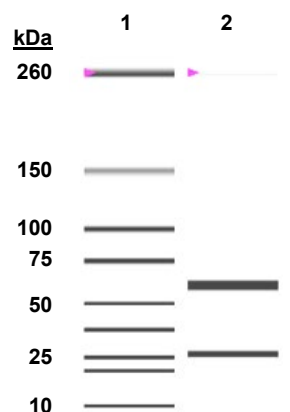
**Lot: 63326203<sup>1</sup>**

**Manufacturing Date: 03MAR2015**

TEST	SPECIFICATIONS	RESULTS
<b>Antibody Class Determination</b>	Report results	IgG2ak
<b>Experion Pro260 Analysis</b>	Correct molecular weight for heavy and light chains	Correct molecular weight for heavy and light chains (Figure 1)
Average Purity	Report results	99.9% pure
<b>Concentration by Spectrophotometer at OD<sub>280</sub></b>	≥ 1.0 mg per mL	1.3 mg per mL
<b>Functional Activity by Western Blot</b>		
GroES (Gene Rv3418c) (BEI Resources NR-14861)	Report results	Reactive (Figure 2)
Culture filtrate protein fraction (BEI Resources NR-14826)	Report results	Non-reactive (Figure 2)
<b>Sterility</b>	0.22 µm filter-sterilized	0.22 µm filter-sterilized

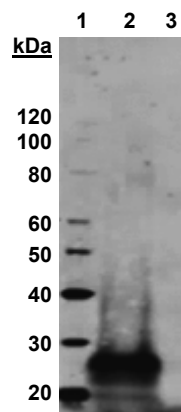
<sup>1</sup>Mouse monoclonal antibody was purified using protein G affinity chromatography from supernatants obtained from mouse hybridoma clone IT-3 (SA-12) adapted to serum-free media.

**Figure 1: Experion Pro260 Analysis**



Lane 1: Protein 260 Ladder  
Lane 2: NR-49223

**Figure 2: Functional Activity by Western Blot**



Lane 1: MagicMark™ XP Protein Standard  
Lane 2: GroES (Gene Rv3418c)  
Lane 3: Culture filtrate protein fraction

/Heather Couch/

Heather Couch

03 AUG 2019

Program Manager or designee, ATCC Federal Solutions

ATCC®, on behalf of BEI Resources, hereby represents and warrants that the material provided under this certificate has been subjected to the tests and procedures specified and that the results described, along with any other data provided in this certificate, are true and accurate to the best of ATCC®'s knowledge.

ATCC® is a trademark of the American Type Culture Collection.

You are authorized to use this product for research use only. It is not intended for human use.

