

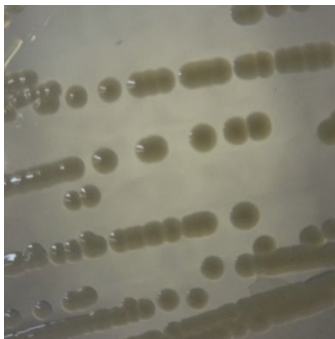


<sup>7</sup>CLSI does not have published polymyxin B MIC breakpoints for *E. coli*. Isolates are defined only as wild type or non-wild type. For more information, please refer to Chew, K. L., et al. "Colistin and Polymyxin B Susceptibility Testing for Carbapenem-Resistant and *mcr*-Positive Enterobacteriaceae: Comparison of Sensititre, MicroScan, Vitek 2, and Etest with Broth Microdilution." *J. Clin. Microbiol.* 55 (2017): 2609-2616. PubMed: 28592552.

<sup>8</sup>Also consistent with *Shigella* and other *Escherichia* species

<sup>9</sup>Purity of this lot was assessed for 7 days at 37°C in an aerobic atmosphere with 5% CO<sub>2</sub> on Tryptic Soy agar.

**Figure 1: Colony Morphology**



/Heather Couch/

Heather Couch

Program Manager or designee, ATCC Federal Solutions

20 SEP 2019

ATCC®, on behalf of BEI Resources, hereby represents and warrants that the material provided under this certificate has been subjected to the tests and procedures specified and that the results described, along with any other data provided in this certificate, are true and accurate to the best of ATCC®'s knowledge.

ATCC® is a trademark of the American Type Culture Collection.

You are authorized to use this product for research use only. It is not intended for human use.

