

**Monoclonal Anti-*Plasmodium falciparum* 25-kDa Gamete Surface Protein (Pfs25), Clone 4B7 (produced *in vitro*)**

**Catalog No. MRA-28**

This reagent is the tangible property of the U.S. Government.

**Product Description:**

Antibody Class: IgG

Monoclonal antibody prepared against the 25-kDa gamete surface protein of *Plasmodium falciparum* (*P. falciparum*) (Pfs25) was produced from hybridoma clone 4B7 supernatant.

**Lot: 70013640<sup>1</sup>**

**Manufacturing Date: 13JUL2012**

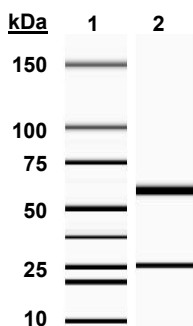
TEST	SPECIFICATIONS	RESULTS
Antibody Class Determination	Report results	IgG2ak
Experion™ Pro260 Analysis	Correct molecular weight (MW) for heavy and light chains; Report purity	Correct MW for heavy and light chains (Figure 1); 99.6% pure
Functional Activity Western blot analysis <sup>2</sup> ELISA <sup>3</sup>	Reactive Reactive	Reactive (~ 23 kDa) Reactive
Concentration by Spectrophotometer at OD <sub>280</sub>	~ 1 mg per mL	1.1 mg per mL
Final Product Volume per vial	Report results	100 µL
Sterility	0.22 µm filter-sterilized	0.22 µm filter-sterilized

<sup>1</sup>MRA-28 lot 70013640 was aliquoted from thawed bulk BEI Resources MRA-28 lot 60673339, which was purified from hybridoma supernatant (MRA-315 lot 60673338) using a protein G spin column (Thermo 89961), and vialled in PBS.

<sup>2</sup>Using *P. falciparum* 25-kDa Zygote Surface Antigen (yRPEU-TBV25H/VK1) with C-Terminal Histidine Tag, Recombinant from *Saccharomyces cerevisiae* VK1 (BEI Resources MRA-59) as specific antigen, a 1:400 dilution of MRA-28 as primary antibody and a 1:10000 dilution of IRDye® 800CW Goat anti-Mouse IgG (LI-COR® 926-32210) as secondary antibody.

<sup>3</sup>Plates were coated with MRA-59 (10 µg per mL). MRA-28 was reactive in the 1:4000 to 1:6000 range.

**Figure 1: Experion™ Pro260 Analysis**



Lane 1: MW markers (kDa)  
Lane 2: MRA-28

/Heather Couch/  
Heather Couch

04 NOV 2019

Program Manager or designee, ATCC Federal Solutions

ATCC®, on behalf of BEI Resources, hereby represents and warrants that the material provided under this certificate has been subjected to the tests and procedures specified and that the results described, along with any other data provided in this certificate, are true and accurate to the best of ATCC®'s knowledge.

ATCC® is a trademark of the American Type Culture Collection.

You are authorized to use this product for research use only. It is not intended for human use.



BEI Resources  
[www.beiresources.org](http://www.beiresources.org)

E-mail: [contact@beiresources.org](mailto:contact@beiresources.org)  
Tel: 800-359-7370  
Fax: 703-365-2898