

***Bilophila wadsworthia*, Strain 3_1_6**

Catalog No. HM-32

Product Description:

Bilophila wadsworthia (*B. wadsworthia*), strain 3_1_6 was isolated from the colon of a patient undergoing a colon cancer screening in Calgary, Alberta, Canada.

Lot: 70026794^{1,2}

Manufacturing Date: 08JUL2019

TEST	SPECIFICATIONS	RESULTS
Phenotypic Analysis Cellular morphology Colony morphology ³ Motility	Gram-negative rods Report results Report results	Gram-negative rods Punctiform and gray (Figure 1) Non-motile
Genotypic Analysis Sequencing of 16S ribosomal RNA gene (~ 1450 base pairs)	≥ 99% sequence identity to <i>B. wadsworthia</i> , strain 3_1_6 (GenBank: ADCP02000001.1)	99.9% sequence identity to <i>B. wadsworthia</i> , strain 3_1_6 (GenBank: ADCP02000001.1)
Purity (post-freeze)⁴ Anaerobic Aerobic with 5% CO ₂	Consistent with expected colony morphology No growth	Consistent with expected colony morphology No growth
Viability (post-freeze)³	Growth	Growth

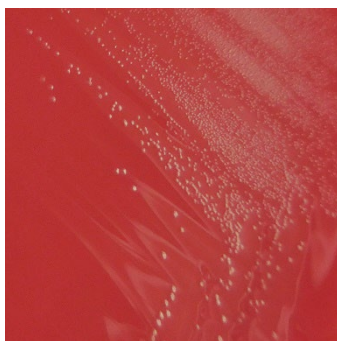
¹Quality control of HMP material is only performed to demonstrate that the material distributed by BEI Resources is identical to the deposited material.

²*B. wadsworthia*, strain 3_1_6 was deposited by Professor Emma Allen-Vercoe, Department of Molecular and Cellular Biology, University of Guelph, Guelph, Ontario, Canada. The deposited material was inoculated into Modified Reinforced Chopped Meat medium and grown for 4 days at 37°C in an anaerobic atmosphere (< 5% O₂; Remel™ Pack-Anaero™). After three additional passages under propagation condition, the growth material was preserved in 10% glycerol. HM-32 was produced by inoculation of the preserved material into Modified Reinforced Chopped Meat broth, which was used to inoculate Tryptic Soy agar with 5% defibrinated sheep blood plates and both were grown for 5 days at 37°C in an anaerobic atmosphere. The material from the initial growth was passaged once in Modified Chopped Meat broth, which was grown 5 days at 37°C in an anaerobic atmosphere to produce this lot.

³5 days at 37°C in an anaerobic atmosphere on Tryptic Soy agar with 5% defibrinated sheep blood

⁴Purity of this lot was assessed for 7 days at 37°C on Tryptic Soy agar with 5% defibrinated sheep blood.

Figure 1: Colony Morphology



/Heather Couch/
Heather Couch

12 NOV 2019

Program Manager or designee, ATCC Federal Solutions

ATCC®, on behalf of BEI Resources, hereby represents and warrants that the material provided under this certificate has been subjected to the tests and procedures specified and that the results described, along with any other data provided in this certificate, are true and accurate to the best of ATCC®'s knowledge.

ATCC® is a trademark of the American Type Culture Collection.

You are authorized to use this product for research use only. It is not intended for human use.

