

Monoclonal Anti-*Plasmodium falciparum*, Strain 3D7 230 kDa Gamete Surface Protein (Pfs 230), Clone 1B3 (produced *in vitro*)

Catalog No. MRA-878A

This reagent is the tangible property of the U.S. Government.

Product Description:

Antibody Class: IgG2ak

Mouse monoclonal antibody prepared against the 230 kDa gamete surface protein of *Plasmodium falciparum* (*P. falciparum*) strain 3D7 was purified from 1B3 hybridoma supernatant (BEI Resources MRA-878) by protein G affinity chromatography.

Lot: 63283089^{1,2}

Manufacturing Date: 09MAR2015

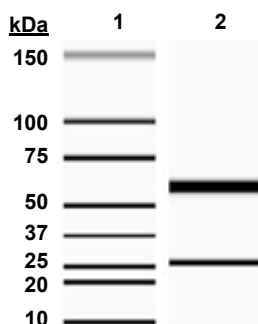
TEST	SPECIFICATIONS	RESULTS
Antibody Class Determination	IgG2ak	IgG2ak
Experion™ Pro260 Analysis	Correct molecular weight (MW) for heavy and light chains; Report purity	Correct molecular weight (MW) for heavy and light chains (Figure 1); 99.7% pure
Concentration by Spectrophotometer at OD ₂₈₀	~ 1 mg per mL	1.2 mg per mL
Functional Activity by Immunofluorescence Assay ³ <i>P. falciparum</i> clone 3D7 (BEI Resources MRA-1001) smears <i>P. falciparum</i> Pfs230 knockout mutants (BEI Resources MRA-1271 and MRA-1272)	Reactive Nonreactive	Reactive; specific at dilution of 1:250 (Figure 2) Nonreactive; specific at dilution of 1:250
Sterility	0.22 µm filter-sterilized	0.22 µm filter-sterilized

¹Mouse monoclonal antibody was purified using protein G affinity chromatography from supernatants obtained from mouse 1B3 hybridoma (BEI Resources MRA-878).

²No results were observed for western blots or ELISA utilizing MRA-878A.

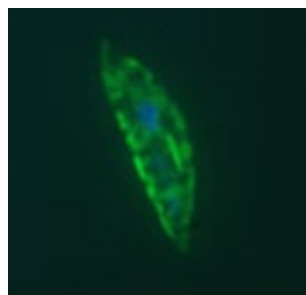
³Specific labeling of *P. falciparum* smears with MRA-878A with FITC and DAPI was observed following paraformaldehyde fixation.

Figure 1: Experion™ Pro260 Analysis



Lane 1: Experion™ Protein 260 Ladder
Lane 2: MRA-878A

Figure 2: *P. falciparum* Immunofluorescence Assay



/Heather Couch/

Heather Couch

22 JAN 2020

Program Manager or designee, ATCC Federal Solutions

ATCC®, on behalf of BEI Resources, hereby represents and warrants that the material provided under this certificate has been subjected to the tests and procedures specified and that the results described, along with any other data provided in this certificate, are true and accurate to the best of ATCC®'s knowledge.

ATCC® is a trademark of the American Type Culture Collection.

You are authorized to use this product for research use only. It is not intended for human use.

