

**Fraction 1 Capsular Antigen (F1) from *Yersinia pestis* with N-terminal Histidine Tag, Expressed in *Escherichia coli***

**Catalog No. NR-15771**

This reagent is the property of the U. S. Government.

**Product Description:**

NR-15771 is a recombinant form of the *Yersinia pestis* (*Y. pestis*) fraction 1 capsular antigen (F1). The recombinant protein was expressed in *Escherichia coli* and purified by nickel affinity and ion exchange chromatography.

**Lot: 70026663**

**Manufacturing Date: 19SEP2019**

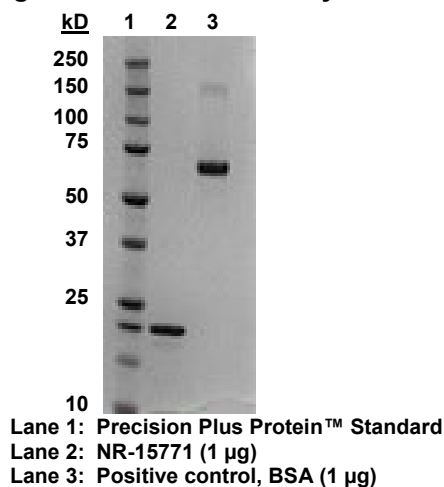
TEST	SPECIFICATIONS	RESULTS
Appearance	Clear and colorless	Clear and colorless
SDS-PAGE Analysis	Protein band of interest represents > 90% of total staining intensity	Dominant band of ~ 20 kDa accounting for > 90% of total staining intensity (Figure 1)
Identification by Western Blot Analysis Monoclonal anti-histidine tag <sup>1</sup> Monoclonal anti-F1 <sup>2</sup>	Reactive Reactive	Reactive (Figure 2) Reactive (Figure 3)
Protein Concentration by Bicinchoninic Acid Assay <sup>3</sup>	Report results	1.3 mg per mL
Final Product Amount per vial Volume per vial	Report results Report results	400 µg 300 µL
Endotoxin Content (Limulus Amebocyte Lysate Assay)	Report results	< 3.86 EU per mg
Filtration	0.2 µm sterile-filtered	0.2 µm sterile-filtered

<sup>1</sup>R&D Systems® Cat. No. MAB050 (IgG1) (1:1000 dilution)

<sup>2</sup>Santa Cruz® Cat. No. SC-52303 (IgG1) (1:1000 dilution)

<sup>3</sup>Using BSA as a standard

**Figure 1: SDS-PAGE Analysis**



**Figure 2: Anti-Histidine Western Blot Analysis**

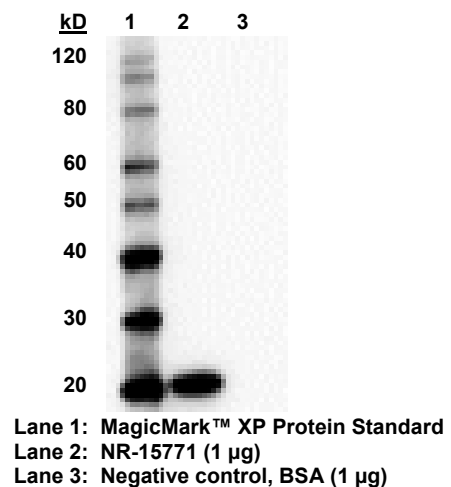
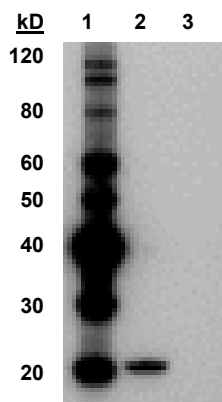


Figure 3: Anti-F1 Western Blot Analysis



Lane 1: MagicMark™ XP Protein Standard

Lane 2: NR-15771 (1 µg)

Lane 3: Negative control, BSA (1 µg)

/Heather Couch/

Heather Couch

28 DEC 2019

Program Manager or designee, ATCC Federal Solutions

ATCC®, on behalf of BEI Resources, hereby represents and warrants that the material provided under this certificate has been subjected by the contributor to the tests and procedures specified and that the results described, along with any other data provided in this certificate, are true and accurate to the best of ATCC®'s knowledge.

ATCC® is a trademark of the American Type Culture Collection.

You are authorized to use this product for research use only. It is not intended for human use.

