

***Streptococcus salivarius*, Strain SK126**

Catalog No. HM-121

Product Description:

Streptococcus salivarius (*S. salivarius*), strain SK126 was isolated from normal skin of the right arm of a 47-year-old woman. HM-121 lot 70032423 was produced by the inoculation of BEI Resources seed material into Brain Heart Infusion broth and incubated for 1 day at 37°C in an aerobic atmosphere with 5% CO₂. Broth inoculum was added to Tryptic Soy agar with 5% defibrinated sheep blood kolles which were grown 1 day at 37°C in an aerobic atmosphere with 5% CO₂ to produce this lot.

Note: Quality control of HMP material is only performed to demonstrate that the material distributed by BEI Resources is identical to the deposited material. It should not be considered a complete characterization of the deposited organism.

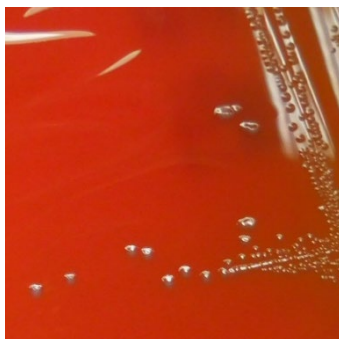
Lot: 70032423

Manufacturing Date: 16JAN2020

TEST	SPECIFICATIONS	RESULTS
Phenotypic Analysis Cellular morphology Colony morphology 1 day at 37°C in an aerobic atmosphere with 5% CO ₂ on Tryptic Soy Agar with 5% defibrinated sheep blood Hemolysis Motility (wet mount)	Gram-positive cocci Report results Report results Report results	Gram-positive cocci Circular, low convex, entire, smooth and white (Figure 1) Alpha-hemolytic Non-motile
Genotypic Analysis Sequencing of 16S ribosomal RNA gene (~ 1480 base pairs)	≥ 99% sequence identity to <i>S. salivarius</i> , strain SK126 (GenBank: ACLO01000035.1)	99.9% sequence identity to <i>S. salivarius</i> , strain SK126 (GenBank: ACLO01000035.1) ¹
Purity (post-freeze) 7 days at 37°C in an aerobic atmosphere with 5% CO ₂ on Tryptic Soy agar with 5% defibrinated sheep blood	Growth consistent with expected colony morphology	Growth consistent with expected colony morphology
Viability (post-freeze) 1 day at 37°C in an aerobic atmosphere with 5% CO ₂ on Tryptic Soy Agar with 5% defibrinated sheep blood	Growth	Growth

¹Also consistent with other *Streptococcus* species

Figure 1: Colony Morphology



/Heather Couch/
Heather Couch

26 MAR 2020

Program Manager or designee, ATCC Federal Solutions

ATCC®, on behalf of BEI Resources, hereby represents and warrants that the material provided under this certificate has been subjected to the tests and procedures specified and that the results described, along with any other data provided in this certificate, are true and accurate to the best of ATCC®'s knowledge.

ATCC® is a trademark of the American Type Culture Collection.

You are authorized to use this product for research use only. It is not intended for human use.

