

Macrophage Cell Line Derived from TLR2/TLR4 Double Knockout Mice

Catalog No. NR-19975

This reagent is the property of the U.S. Government.

Product Description:

This murine macrophage cell line was derived using primary bone marrow cells from TLR2/TLR4 double knockout mice. The macrophage cells were immortalized by infection with the ecotropic transforming replication-deficient retrovirus J2 using techniques described in the literature.

Lot: 70027289

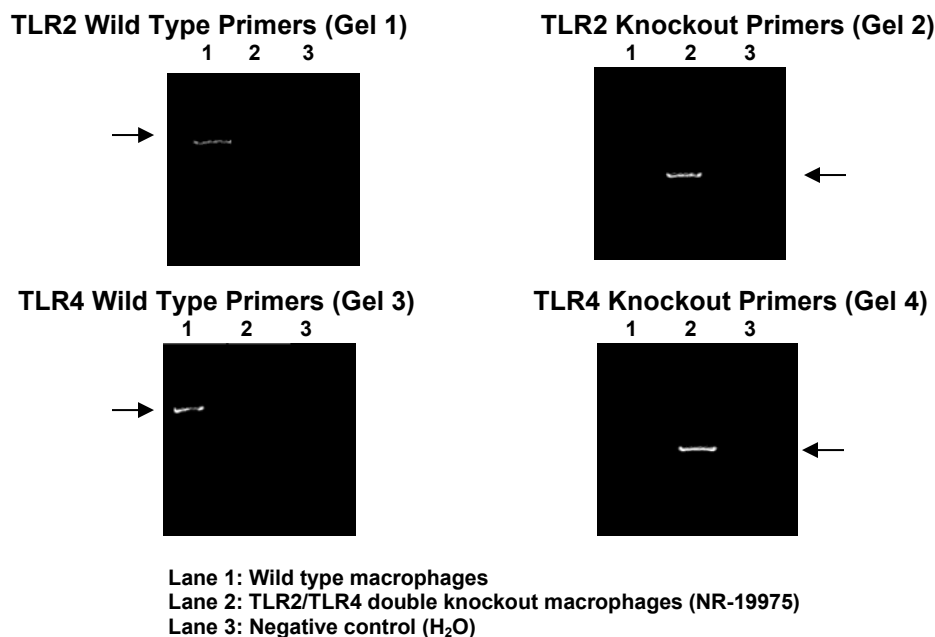
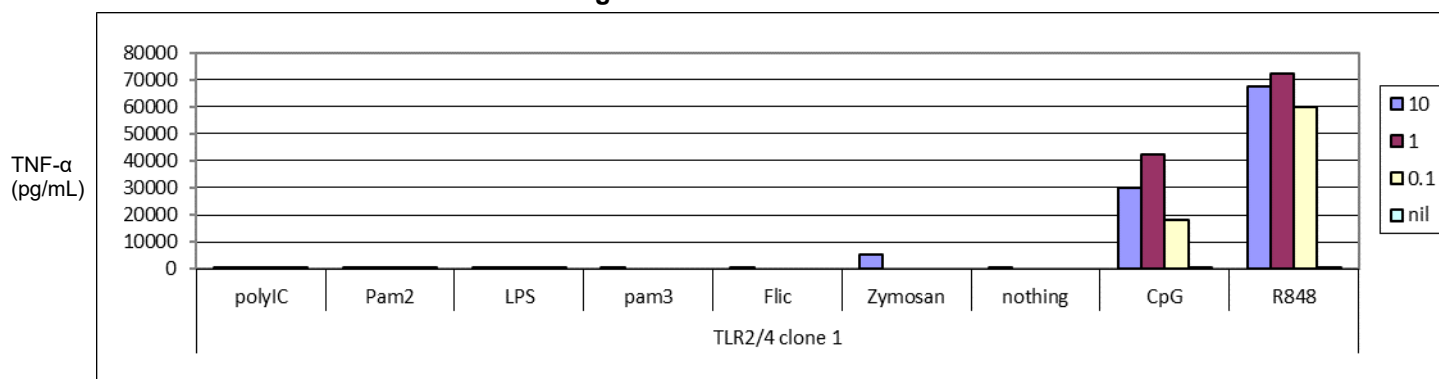
Manufacturing Date: 22JUL2019

TEST	SPECIFICATIONS	RESULTS
Growth Properties	Adherent	Adherent
PCR Amplification of Extracted DNA (Figure 1)¹ TLR2 wild type primers TLR2 knockout primers TLR4 wild type primers TLR4 knockout primers	No amplicon Expected amplicon No amplicon Expected amplicon	No amplicon Expected amplicon No amplicon Expected amplicon
Stimulation of TNF-α¹	Report results	Figure 2
Multiplex PCR Amplification of Cytochrome C Oxidase I (COI) Gene	Murine origin; No evidence of another species	Murine origin; No evidence of another species
Total Cell Count	$> 1.0 \times 10^6$ cells per vial	4.5×10^6 cells per vial
Post-Freeze Viability	$\geq 50\%$	91.7%
Sterility (21-day incubation) Harpo's HTYE broth, 37°C and 26°C, aerobic ² Trypticase Soy broth, 37°C and 26°C, aerobic Sabouraud broth, 37°C and 26°C, aerobic Blood agar, 37°C, aerobic Blood agar, 37°C, anaerobic Thioglycollate broth, 37°C, anaerobic DMEM with 10% FBS, 37°C and 5% CO ₂	No growth No growth No growth No growth No growth No growth No growth No growth	No growth No growth No growth No growth No growth No growth No growth No growth
Mycoplasma Contamination Hoechst DNA stain Agar and broth culture (14-day incubation at 37°C) DNA detection by PCR of extracted Test Article nucleic acid	None detected None detected None detected	None detected None detected None detected

¹Depositor QC is NOT lot specific; same data as NR-19975 lot 60523121.

²Atlas, Ronald M. Handbook of Microbiological Media. 3rd ed. Ed. Lawrence C. Parks. Boca Raton: CRC Press, 2004, p. 798

Figure 1: PCR Amplification


Figure 2: Stimulation of TNF- α


/Heather Couch/

Heather Couch

Program Manager or designee, ATCC Federal Solutions

26 NOV 2019

ATCC®, on behalf of BEI Resources, hereby represents and warrants that the material provided under this certificate has been subjected to the tests and procedures specified and that the results described, along with any other data provided in this certificate, are true and accurate to the best of ATCC®'s knowledge.

ATCC® is a trademark of the American Type Culture Collection.

You are authorized to use this product for research use only. It is not intended for human use.



BEI Resources

www.beiresources.org

E-mail: contact@beiresources.org

Tel: 800-359-7370

Fax: 703-365-2898