

***Prevotella buccae*, Strain D17**

**Catalog No. HM-45**

**Product Description:**

*Prevotella buccae* (*P. buccae*), strain D17 was isolated in 2007 from an oral swab taken from a healthy male adult in Canada. HM-45 lot 70032927 was produced by the inoculation of the BEI Resources seed lot into Modified Reinforced Clostridial broth and incubated for 1 day at 37°C in an anaerobic atmosphere (< 5% O<sub>2</sub>; MGC Pack-Anaero™). The material from the initial growth was passaged once in Modified Reinforced Clostridial broth for 1 day at 37°C in an anaerobic atmosphere to produce this lot.

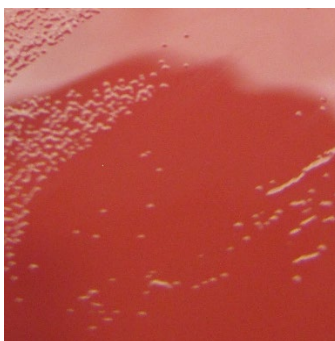
**Note:** Quality control of HMP material is only performed to demonstrate that the material distributed by BEI Resources is identical to the deposited material. It should not be considered a complete characterization of the deposited organism.

**Lot: 70032927**

**Manufacturing Date: 06FEB2020**

TEST	SPECIFICATIONS	RESULTS
<b>Phenotypic Analysis</b> Cellular morphology Colony morphology 1 day at 37°C in an anaerobic atmosphere on Tryptic Soy Agar with 5% sheep blood Motility (wet mount)	Gram-negative bacilli Report results  Report results	Gram-negative bacilli Circular, low convex, entire, smooth and gray (Figure 1)  Non-motile
<b>Genotypic Analysis</b> Sequencing of 16S ribosomal RNA gene (~ 1440 base pairs)	≥ 99% sequence identity to <i>P. buccae</i> , strain D17 (GenBank: ACRB01000001)	99.1% sequence identity to <i>P. buccae</i> , strain D17 (GenBank: ACRB01000001)
<b>Purity (post-freeze)</b> Anaerobic 7 days at 37°C on Tryptic Soy agar with 5% defibrinated sheep blood Aerobic with 5% CO <sub>2</sub> 7 days at 37°C on Tryptic Soy agar with 5% defibrinated sheep blood	Growth consistent with expected colony morphology  No growth	Growth consistent with expected colony morphology  No growth
<b>Viability (post-freeze)</b> 1 day at 37°C in an anaerobic atmosphere on Tryptic Soy Agar with 5% sheep blood	Growth	Growth

**Figure 1: Colony Morphology**



/Heather Couch/  
Heather Couch

06 MAY 2020

Program Manager or designee, ATCC Federal Solutions

ATCC<sup>®</sup>, on behalf of BEI Resources, hereby represents and warrants that the material provided under this certificate has been subjected to the tests and procedures specified and that the results described, along with any other data provided in this certificate, are true and accurate to the best of ATCC<sup>®</sup>'s knowledge.

ATCC<sup>®</sup> is a trademark of the American Type Culture Collection.

You are authorized to use this product for research use only. It is not intended for human use.

