

***Mycobacterium tuberculosis*, Strain HN878, Whole Cell Lysate**

Catalog No. NR-14824

This reagent is the tangible property of the U.S. Government.

Product Description:

NR-14824 is a preparation of the whole cell lysate from *Mycobacterium tuberculosis*, strain HN878 and contains proteins, lipids and carbohydrates present within the bacterial cell.

Lot: 70034727

Manufacturing Date: 29MAR2020

Production and QC testing were performed by Colorado State University (CSU). The CSU documentation for lot 17.HN878.6.7.10.WCL is attached.

ATCC®, on behalf of BEI Resources, hereby represents and warrants that the material provided under this certificate has been subjected by the contractor to the tests and procedures specified and that the results described, along with any other data provided in this certificate, are true and accurate to the best of ATCC®'s knowledge.

ATCC® is a trademark of the American Type Culture Collection.

You are authorized to use this product for research use only. It is not intended for human use.



WORK SHEET FOR WHOLE CELL LYSATE

General Information

BEI Catalog Number: NR-14824
CSU Lot Number: 17.HN878.6.7.10.WCL
Species: Mycobacterium tuberculosis
Strain: HN878

Sonication and Fractionation Information

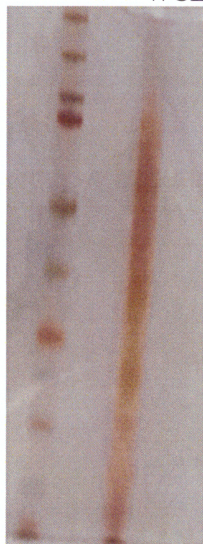
Starting material (lot #): 17.HN878.6.7.10.WCg.b
Cells Irradiated: Yes
Viability Test Performed: No Viable Organism Detected
Cell amount (wet weight): 61.5g
SOP #: PP007.4 Notebook pages: ATCC-CM-1, 52
Date of French Press Sonication: 03/27/20; Buffer used: PBS-1mM EDTA
Centrifugation Notes N/A
Date 10 mM ammonium bicarbonate dialysis started: 03/27/20
date completed: 03/29/20
Notebook; page(s): ATCC-CM-1, 52

Quality Control Information

BCA: 4.98 µg/µl Notebook and page(s): ATCC-CM-1, 52-54
Total Protein: 810 mg
Silver Stain Date: 03/29/20, finished 4/1/20. Notebook and page(s): ATCC-CM, 54-55

QC Gel:

Ladder 4 µg
WCL



Aliquot Information:

81 x 10 mg aliquots

C. McHaffey
(Research Associate)

4/19/20
(date)

[Signature]
(Laboratory Supervisor)

4/20/20
(date)