

**Vaccinia Virus (WR) L1R Protein with C-Terminal Histidine Tag, Recombinant from Baculovirus**

**Catalog No. NR-21986**

**Product Description:**

A recombinant form of the L1R membrane glycoprotein [L1R (185t)] of the Western Reserve (WR) strain of vaccinia virus (VV) containing a C-terminal hexa-histidine tag was produced in High-5 insect cells using a baculovirus expression system and purified using nickel affinity chromatography. NR-21986 contains residues 1 to 185 of the L1R protein.

**Lot: 70015731**

**Manufacturing Date: 04OCT2018**

TEST	SPECIFICATIONS	RESULTS
<b>Appearance</b>	Clear and colorless with no particulate matter	Clear and colorless with no particulate matter
<b>SDS-PAGE (Coomassie Blue densitometer scan)</b>	Dominant band near 25-kDa marker accounts for $\geq 90\%$ of staining intensity	Dominant band near 25-kDa marker accounts for $> 90\%$ of staining intensity (Figure 1)
<b>Functional Activity by Western Blot Analysis</b> Human polyclonal anti-VV immune globulin (VIG) <sup>1</sup> Mouse monoclonal antibodies to VV (WR) L1R residues 1-185 <sup>2</sup> Mouse monoclonal antibody to VV (WR) A33R residues 58-185 <sup>3</sup>	Reactive Reactive Not reactive	Reactive Reactive (representative data in Figure 2) Not reactive
<b>Final Product</b> Amount per vial Volume per vial	Report results Report results	0.194 mg 125 $\mu$ L
<b>Concentration by Bicinchoninic Acid Assay</b> Bovine Serum Albumin (standard)	Report results	1.552 mg per mL
<b>Demonstration of Protein Glycosylation</b>	Size reduction of protein observed on SDS-PAGE when treated with de-glycosylating enzyme N-glycosidase F (PNGase F)	Size reduction of protein observed on SDS-PAGE when treated with de-glycosylating enzyme PNGase F (Figure 3)
<b>Endotoxin Content</b> Limulus Amoebocyte Lysate Assay	$< 1000$ EU per mg	36.5 EU per mg
<b>Filtration</b>	0.2 $\mu$ m sterile-filtered	0.2 $\mu$ m sterile-filtered

<sup>1</sup>BEI Resources NR-650

<sup>2</sup>BEI Resources NR-417 to NR-421 and NR-566

<sup>3</sup>BEI Resources NR-565

Figure 1: SDS-PAGE Analysis

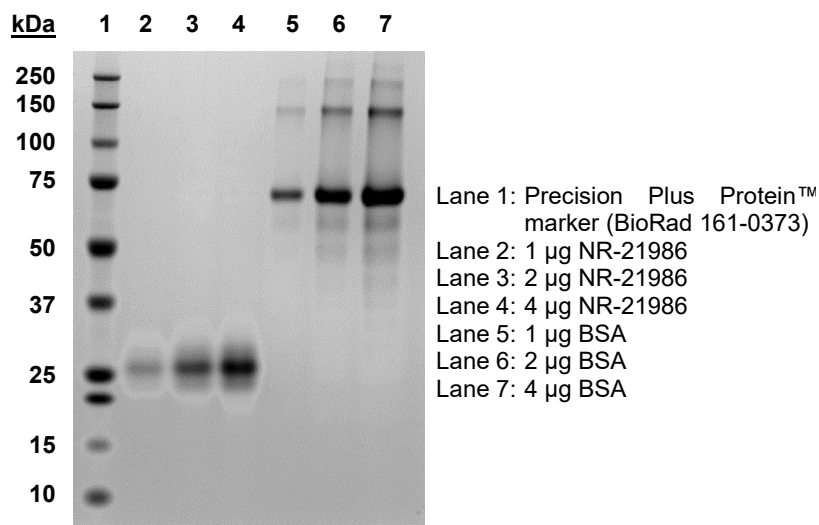


Figure 2: Western Blot Analysis

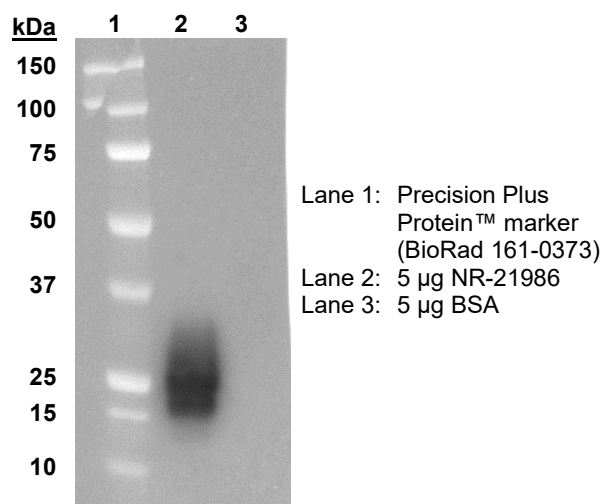
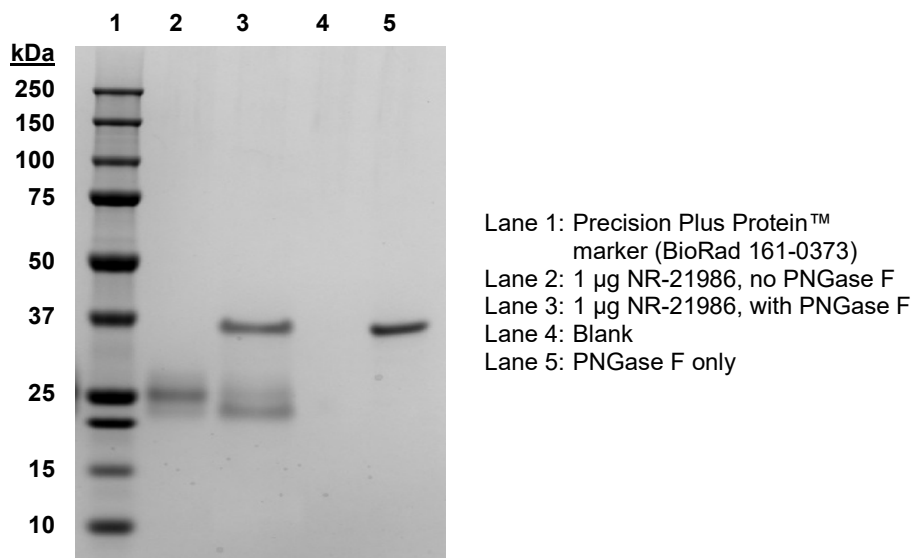


Figure 3: Protein Glycosylation Analysis



/Heather Couch/  
 Heather Couch

Program Manager or designee, ATCC Federal Solutions

01 APR 2020

ATCC®, on behalf of BEI Resources, hereby represents and warrants that the material provided under this certificate has been subjected to the tests and procedures specified and that the results described, along with any other data provided in this certificate, are true and accurate to the best of ATCC's knowledge.

ATCC® is a trademark of the American Type Culture Collection.  
 You are authorized to use this product for research use only. It is not intended for human use.

