

Staphylococcus epidermidis, Strain VCU013

Catalog No. NR-46376

Product Description:

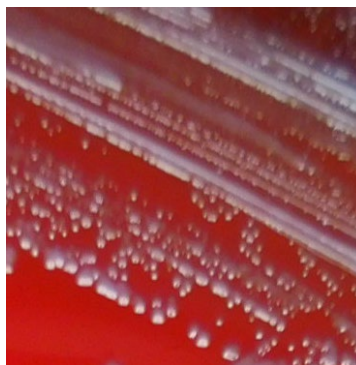
Staphylococcus epidermidis (*S. epidermidis*), strain VCU013 is of unknown origin and was deposited to BEI Resources as part of the NARSA collection. NR-46376 lot 70036692 was produced by inoculation of seed material into Tryptic Soy broth and grown for 1 day at 37°C in an aerobic atmosphere. Broth inoculum was added to Tryptic Soy agar with 5% defibrinated sheep blood kolles, which were grown for 1 day at 37°C in an aerobic atmosphere. Quality control testing was completed under propagation conditions unless otherwise noted.

Lot: 70036692

Manufacturing Date: 12JUN2020

| TEST | SPECIFICATIONS | RESULTS |
|---|--|--|
| Phenotypic Analysis Colony morphology Cellular morphology Motility (wet mount) Hemolysis Biochemical characterization Catalase Coagulase VITEK® MS (MALDI-TOF) | Report results Gram-positive cocci Report results Report results Positive Negative <i>S. epidermidis</i> (≥ 89.9%) | Circular, low convex, entire, smooth and white (Figure 1) Gram-positive cocci Non-motile Non-hemolytic Positive Negative <i>S. epidermidis</i> (99.9%) |
| Genotypic Analysis Sequencing of 16S ribosomal RNA gene (~ 1460 base pairs) | ≥ 99% sequence identity to <i>S. epidermidis</i> , strain VCU013 (GenBank: JHTZ01000030.1 and JHTZ01000009.1) | 99.9% sequence identity to <i>S. epidermidis</i> , strain VCU013 (GenBank: JHTZ01000030.1 and JHTZ01000009.1) |
| Purity (post-freeze) 7 days at 37°C in an aerobic atmosphere with 5% CO ₂ on Tryptic Soy agar with 5% defibrinated sheep blood | Consistent with expected colony morphology | Consistent with expected colony morphology |
| Viability (post-freeze) 1 day at 37°C in an aerobic atmosphere on Tryptic Soy agar with 5% defibrinated sheep blood | Growth | Growth |

Figure 1: Colony Morphology



/Heather Couch/

Heather Couch

19 AUG 2020

Program Manager or designee, ATCC Federal Solutions

ATCC®, on behalf of BEI Resources, hereby represents and warrants that the material provided under this certificate has been subjected by ATCC® to the tests and procedures specified and that the results described, along with any other data provided in this certificate, are true and accurate to the best of ATCC®'s knowledge.

ATCC® is a trademark of the American Type Culture Collection.

You are authorized to use this product for research use only. It is not intended for human use.

