

**Genomic RNA from SARS-Related Coronavirus 2, Isolate Italy-INMI1**

**Catalog No. NR-52498**

**Product Description:**

Genomic RNA was extracted from a preparation of cell lysate and supernatant from *Cercopithecus aethiops* kidney epithelial cells (Vero E6; ATCC® CRL-1586™) infected with severe acute respiratory syndrome-related coronavirus 2 (SARS-CoV-2), isolate Italy-INMI1, using QIAamp® Viral RNA Mini Kit (Qiagen 52904). The viral genomic RNA is in a background of cellular nucleic acid and carrier RNA.

**Lot: 70035261**

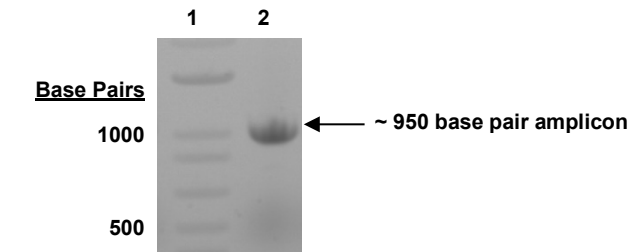
**Manufacturing Date: 15MAY2020**

TEST	SPECIFICATIONS	RESULTS
<b>Sequencing of Species-Specific Region</b> (870 nucleotides)	≥ 98% identity with SARS-CoV-2, isolate Italy-INMI1 (GenBank: MT066156.1)	100% identity with SARS-CoV-2, isolate Italy-INMI1 (GenBank: MT066156.1)
<b>Functional Activity by RT-PCR Amplification<sup>1</sup></b>	~ 950 base pair amplicon	~ 950 base pair amplicon (Figure 1)
<b>Genome Copy Number Using BioRad QX200 Droplet Digital PCR (ddPCR™) System</b> (Post vial; 9 replicates)	Report results	5.85 × 10 <sup>7</sup> genome equivalents/mL
<b>Virus Inactivation (14 Days, 2 Passages)</b> 10% of total yield inoculated on Vero E6 cells and evaluated for cytopathic effect <sup>2</sup> Passage 1 Passage 2	No viable virus detected No viable virus detected	No viable virus detected No viable virus detected
<b>Virus Inactivation (14 Days, 2 Passages)</b> 100% of total yield inoculated on Vero E6 cells and evaluated for cytopathic effect <sup>2</sup> Passage 1 Passage 2	No viable virus detected No viable virus detected	No viable virus detected No viable virus detected

<sup>1</sup>Amplified using iTaq™ Universal SYBR Green One-step Kit (Bio-Rad 172-5151) with 5 µL of NR-52498 in a 50 µL reaction

<sup>2</sup>Supernatant was tested by qPCR to confirm absence of CPE and no evidence of replicative RNA was detected. Samples from both passages were tested by qPCR at the end of day 14 of the passages.

**Figure 1: Functional Activity of NR-52498 by RT-PCR Amplification**



Lane 1: Invitrogen™ TrackIt™ 1 Kb Plus DNA Ladder  
Lane 2: PCR product from 1 µL of NR-52498

/Heather Couch/

Heather Couch

18 SEP 2020

Program Manager or designee, ATCC Federal Solutions

ATCC®, on behalf of BEI Resources, hereby represents and warrants that the material provided under this certificate has been subjected to the tests and procedures specified and that the results described, along with any other data provided in this certificate, are true and accurate to the best of ATCC®'s knowledge.

ATCC® is a trademark of the American Type Culture Collection.

You are authorized to use this product for research use only. It is not intended for human use.

