

Elizabethkingia bruuniana, Strain G0146

Catalog No. NR-51492

This reagent is the tangible property of the U.S. Government.

Product Description:

Elizabethkingia bruuniana (*E. bruuniana*), strain G0146 was isolated in 1975 from the blood of a human in Margate, England, United Kingdom. NR-51492 lot 70033894 was produced by inoculation of the deposited material into Nutrient broth and grown for 1 day at 37°C in an aerobic atmosphere. Broth inoculum was added to Nutrient agar kolles, which were grown for 2 days at 37°C in an aerobic atmosphere to produce this lot. Quality control testing was completed under propagation conditions unless otherwise noted.

Lot: 70033894

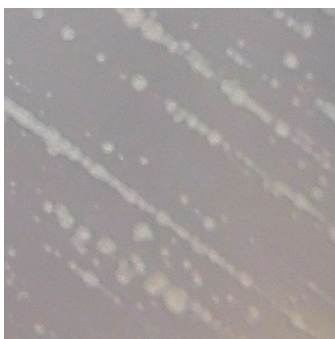
Manufacturing Date: 27MAR2020

TEST	SPECIFICATIONS	RESULTS
Phenotypic Analysis Cellular morphology Colony morphology Motility (wet mount) Biochemical characterization Catalase Oxidase VITEK® MS (MALDI-TOF)	Gram-negative rods Report results Report results Positive Positive <i>Elizabethkingia</i> spp.	Gram-negative rods Circular, convex, entire, smooth and cream (Figure 1) Non-motile Positive Positive <i>E. miricola</i> (99.9%) ¹
Genotypic Analysis Sequencing of 16S ribosomal RNA gene (~ 1460 base pairs)	≥ 99% sequence identity to <i>E. bruuniana</i> , strain G0146 (GenBank: CP014337.1)	100% sequence identity to <i>E. bruuniana</i> , strain G0146 (GenBank: CP014337.1) ²
Purity (post-freeze) 8 days at 37°C in an aerobic atmosphere with and without 5% CO ₂ on Nutrient agar	Growth consistent with expected colony morphology	Growth consistent with expected colony morphology
Viability (post-freeze)	Growth	Growth

¹VITEK® MS (MALDI-TOF) database does not contain *E. bruuniana*. The test was used to confirm to genus. For additional information, refer to Lin, J. -N., et al. "Elizabethkingia Infections in Humans: From Genomics to Clinics." *Microorganisms* 7 (2019): 295. PubMed: 31466280.

²Also consistent with other *Elizabethkingia* species

Figure 1: Colony Morphology



/Heather Couch/

Heather Couch

21 SEP 2020

Program Manager or designee, ATCC Federal Solutions

ATCC[®], on behalf of BEI Resources, hereby represents and warrants that the material provided under this certificate has been subjected to the tests and procedures specified and that the results described, along with any other data provided in this certificate, are true and accurate to the best of ATCC[®]'s knowledge.

ATCC[®] is a trademark of the American Type Culture Collection.

You are authorized to use this product for research use only. It is not intended for human use.

