

**Nucleocapsid Protein N-Terminal RNA Binding Domain from SARS-Related Coronavirus 2, Wuhan-Hu-1 with N-Terminal Histidine Tag, Recombinant from *Escherichia coli***

**Catalog No. NR-53246**

This reagent is the tangible property of the U.S. Government.

**Product Description:**

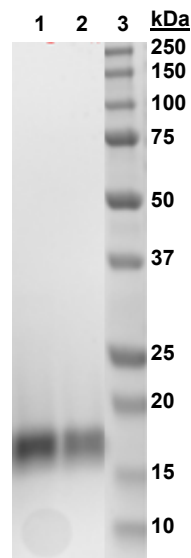
A recombinant, truncated form of the nucleocapsid (N) protein N-terminal RNA binding domain from severe acute respiratory syndrome-related coronavirus 2 (SARS-CoV-2), Wuhan-Hu-1 (GenPept: [QHD43423](#)) was expressed in *Escherichia coli*, strain BL21 and purified by nickel affinity (HisTrap™ FF) and size exclusion (Superdex™ 75 PG 16/600) chromatography. NR-53246 contains 127 residues (amino acids 47 to 173) of the SARS-CoV-2 nucleocapsid phosphoprotein, with a tobacco etch virus (TEV)-cleavable N-terminal hexa-histidine tag.

**Lot: 70039399**

**Manufacturing Date: 22SEP2020**

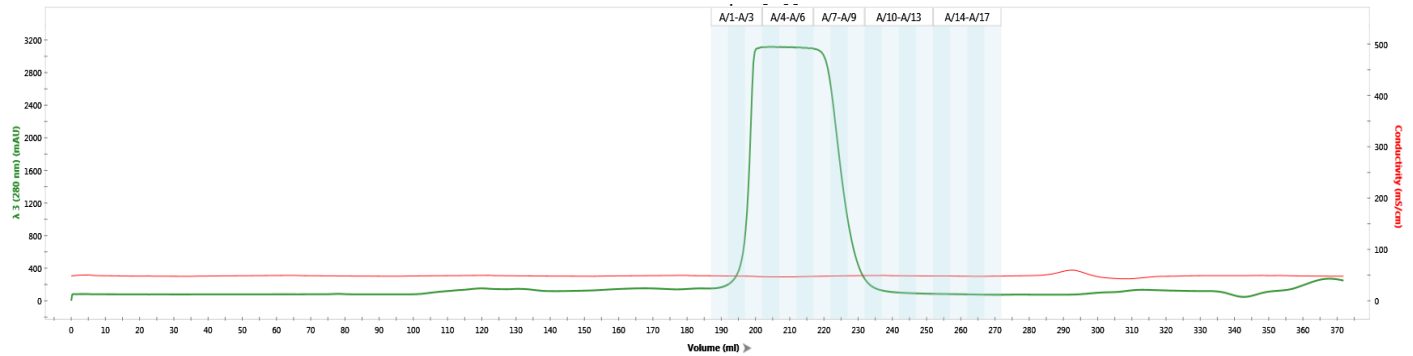
| TEST   | SPECIFICATIONS  | RESULTS  |
|--|---|--|
| <b>Purity</b><br>SDS-PAGE analysis<br>SEC-HPLC (pre-vial)  | Protein band of interest represents > 90% of total staining intensity<br>Report results | Dominant band of ~ 16 kDa represents > 90% of total staining intensity (Figure 1)<br>Single peak in elution profile (Figure 2) |
| <b>Protein Concentration by Nanodrop (A<sub>280</sub>)</b> | Report results  | 5 mg per mL  |
| <b>Final Product</b><br>Amount per vial<br>Volume per vial | Report results<br>Report results  | 1.0 mg<br>0.20 mL  |
| <b>Filtration</b>  | 0.22 µm sterile-filtered  | 0.22 µm sterile-filtered   |

**Figure 1: SDS-PAGE Analysis**



Lane 1: NR-53246 (6 µg)  
Lane 2: NR-53246 (3 µg)  
Lane 3: MW ladder

Figure 2: SEC-HPLC



/Heather Couch/  
Heather Couch

21 OCT 2020

Program Manager or designee, ATCC Federal Solutions

ATCC®, on behalf of BEI Resources, hereby represents and warrants that the material provided under this certificate has been subjected by the contributor to the tests and procedures specified and that the results described, along with any other data provided in this certificate, are true and accurate to the best of ATCC®'s knowledge.

ATCC® is a trademark of the American Type Culture Collection.  
You are authorized to use this product for research use only. It is not intended for human use.

