

Genomic DNA from *Escherichia coli*, Strain E2539-C1

Catalog No. NR-3043

Product Description:

Genomic DNA was isolated from a preparation of enterotoxigenic *Escherichia coli* (*E. coli*) (ETEC), strain E2539-C1, serotype O25:K98:NM. The bacterial preparation used for extraction of genomic DNA was produced from BEI Resources NR-5 lot 3561330. Genomic DNA was extracted using proprietary technology. NR-3043 was viald in TE buffer (10 mM Tris-HCl, 1 mM EDTA, pH 8.0).

Lot: 70031765

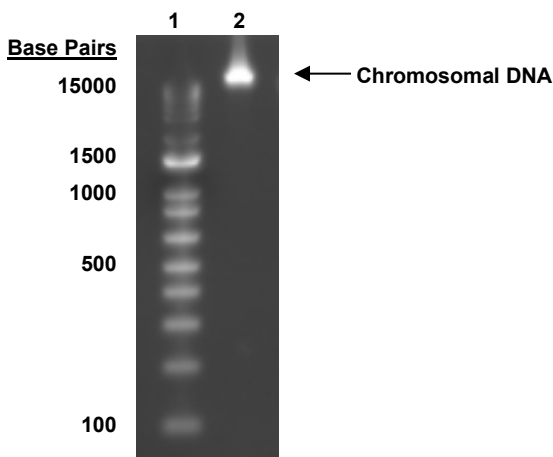
Manufacturing Date: 17JUN2020

TEST	SPECIFICATIONS	RESULTS
Genotypic Analysis Sequencing of 16S ribosomal RNA (rRNA) gene (~ 1430 base pairs)	> 99% identical to <i>E. coli</i> , strain E2539-C1 (GenBank: JHJV01000081.1)	99.3% identical to <i>E. coli</i> , strain E2539-C1 (GenBank: JHJV01000081.1) ¹
Agarose Gel Electrophoresis	High molecular weight chromosomal DNA	High molecular weight chromosomal DNA (Figure 1)
Concentration by PicoGreen® Measurement	0.7 to 1.5 µg in 25 to 100 µL per vial	~ 1.0 µg in 30 µL per vial (33 µg/mL)
Amount per Vial	Report results	~ 1.0 µg
Functional Activity by PCR Amplification 16S ribosomal RNA gene	~ 1500 base pair amplicon	~ 1500 base pair amplicon
OD₂₆₀/OD₂₈₀ Ratio	1.7 to 2.1	1.9
Bacterial Inactivation 10% of total yield plated on agar ² 14 days at 37°C in an aerobic atmosphere in Tryptic Soy agar with 5% defibrinated sheep blood	No viable bacteria detected	No viable bacteria detected

¹Also consistent with *Shigella* and other *Escherichia* species

²An extraction procedure was used that has been shown to consistently inactivate 100% of Gram-negative bacteria.

Figure 1: Agarose Gel Electrophoresis



Lane 1: Invitrogen™ TrackIt™ 1 Kb Plus DNA Ladder
Lane 2: ~ 200 ng of NR-3043

/Heather Couch/

Heather Couch

06 NOV 2020

Program Manager or designee, ATCC Federal Solutions

ATCC®, on behalf of BEI Resources, hereby represents and warrants that the material provided under this certificate has been subjected to the tests and procedures specified and that the results described, along with any other data provided in this certificate, are true and accurate to the best of ATCC®'s knowledge.

ATCC® is a trademark of the American Type Culture Collection.

You are authorized to use this product for research use only. It is not intended for human use.

