

Anthrax Protective Antigen (PA), Recombinant from *Escherichia coli*

Catalog No. NR-3780

This reagent is the property of the U.S. Government.

Product Description:

A recombinant form of the anthrax protective antigen (PA) (GenPept: [WP_000746486](#)) was produced in *Escherichia coli* and purified using conventional chromatographic techniques.

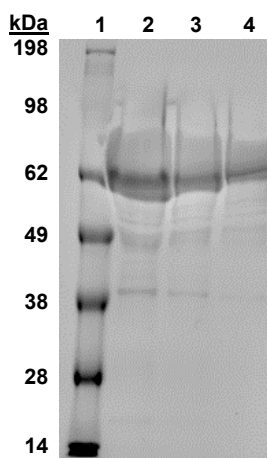
Lot: 70036807

Manufacturing Date: 02JUL2004

TEST	SPECIFICATIONS	RESULTS
Appearance	Clear and colorless with no particulate matter	Clear and colorless with no particulate matter
SDS-PAGE Analysis	Protein band of interest represents > 90% of total staining intensity	Protein band of > 62kDa represents > 90% of total staining intensity (Figure 1)
Final Product Amount per vial Volume per vial	Report results Report results	3.94 mg 0.5 mL
Concentration by Bicinchoninic Acid Assay Bovine Serum Albumin (standard)	Report results	7.87 mg per mL
Sterility (21-day incubation) Harpo's HTYE broth, 37°C and 26°C, aerobic ¹ Trypticase Soy broth, 37°C and 26°C, aerobic Sabouraud broth, 37°C and 26°C, aerobic Sheep blood agar, 37°C, aerobic Sheep blood agar, 37°C, anaerobic Thioglycollate broth, 37°C, anaerobic DMEM with 10% FBS, 37°C and 5% CO ₂	No growth No growth No growth No growth No growth No growth No growth	No growth No growth No growth No growth No growth No growth No growth
Filtration	0.22 µm sterile-filtered	0.22 µm sterile-filtered

¹Atlas, Ronald M. *Handbook of Microbiological Media*. 3rd ed. Ed. Lawrence C. Parks. Boca Raton: CRC Press, 2004, p. 798.

Figure 1: SDS-PAGE Analysis



Lane 1: SeeBlue™ Plus2 Protein marker (ThermoFisher LC5925)

Lane 2: NR-3780 (79 µg)

Lane 3: NR-3780 (39 µg)

Lane 4: NR-3780 (20 µg)

/Heather Couch/
Heather Couch

08 OCT 2020

Program Manager or designee, ATCC Federal Solutions

ATCC®, on behalf of BEI Resources, hereby represents and warrants that the material provided under this certificate has been subjected to the tests and procedures specified and that the results described, along with any other data provided in this certificate, are true and accurate to the best of ATCC®'s knowledge.

ATCC® is a trademark of the American Type Culture Collection.

You are authorized to use this product for research use only. It is not intended for human use.

