

Staphylococcus aureus, Strain MRSA177

Catalog No. HM-467

Product Description:

Staphylococcus aureus (*S. aureus*), strain MRSA177 was isolated from the skin of a patient with a soft tissue infection in Bogotá, Colombia. HM-467 was produced by inoculation of BEI Resources seed lot 59999390 into Brain Heart Infusion broth and grown for 1 day at 37°C in an aerobic atmosphere. Broth inoculum was added to Brain Heart Infusion kolles, which were grown for 1 day at 37°C in an aerobic atmosphere to produce this lot. Quality control testing was completed under propagation conditions unless otherwise noted.

Note: Quality control of HMP material is only performed to demonstrate that the material distributed by BEI Resources is identical to the deposited material. It should not be considered a complete characterization of the deposited organism.

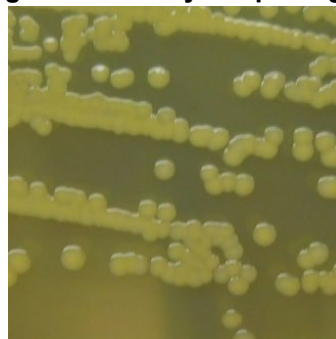
Lot: 70037969

Manufacturing Date: 12AUG2020

TEST	SPECIFICATIONS	RESULTS
Phenotypic Analysis Cellular morphology Colony morphology Hemolysis on blood agar 1 day at 37°C in an anaerobic atmosphere on Tryptic Soy agar with 5% defibrinated sheep blood Motility (wet mount) Antibiotic Susceptibility Profile¹ E-test strips Oxacillin 1 day at 37°C in an aerobic atmosphere on Mueller Hinton II agar Catalase	Gram-positive cocci Report results Report results Report results Resistant Positive	Gram-positive cocci Circular, convex, entire, smooth and cream (Figure 1) β-Hemolysis Non-motile Resistant (64 µg/mL) Positive
Genotypic Analysis Sequencing of 16S ribosomal RNA (rRNA) gene (~ 1420 base pairs)	≥ 99% identical to <i>S. aureus</i> , strain MRSA177 (GenBank: AEC P01000008.1)	100% identical to <i>S. aureus</i> , strain MRSA177 (GenBank: AEC P01000008.1)
Purity (post-freeze) 7 days at 37°C in an aerobic atmosphere with and without 5% CO ₂ on Tryptic Soy agar with 5% defibrinated sheep blood	Growth consistent with expected colony morphology	Growth consistent with expected colony morphology
Viability (post-freeze)	Growth	Growth

¹Minimum Inhibitory Concentration (MIC); MIC Interpretation Guideline: CLSI M100-S28 (2018)

Figure 1: Colony Morphology



/Heather Couch/
Heather Couch

12 NOV 2020

Program Manager or designee, ATCC Federal Solutions

ATCC®, on behalf of BEI Resources, hereby represents and warrants that the material provided under this certificate has been subjected to the tests and procedures specified and that the results described, along with any other data provided in this certificate, are true and accurate to the best of ATCC®'s knowledge.

ATCC® is a trademark of the American Type Culture Collection.

You are authorized to use this product for research use only. It is not intended for human use.

