

***Bordetella pertussis*, Strain H921**

Catalog No. NR-42457

Product Description:

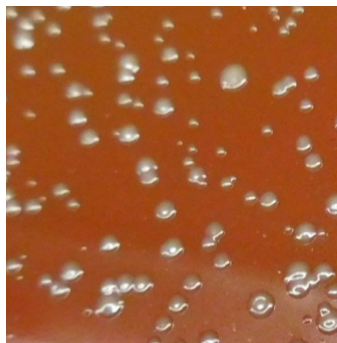
Bordetella pertussis (*B. pertussis*), strain H921 was isolated in 2012 from a nasopharyngeal swab of a patient with whooping cough in Washington, USA. NR-42457 was produced by inoculation of BEI Resources seed lot 62521239 into Bordet Gengou broth and grown for 7 days at 37°C in an aerobic atmosphere. Broth inoculum was added to Tryptic Soy agar with 5% defibrinated sheep blood kolles, which were grown for 7 days at 37°C in an aerobic atmosphere to produce this lot.

Lot: 70036694

Manufacturing Date: 06JUL2020

TEST	SPECIFICATIONS	RESULTS
Phenotypic Analysis Cellular morphology 6 days at 37°C in an aerobic atmosphere on Tryptic Soy agar with 5% defibrinated sheep blood Colony morphology 6 days at 37°C in an aerobic atmosphere on Tryptic Soy agar with 5% defibrinated sheep blood Motility (wet mount) Biochemical tests VITEK® MS (MALDI-TOF)	Report results Report results Report results <i>B. pertussis</i> (≥ 90%)	Gram-negative rods Circular, convex, entire, smooth and gray (Figure 1) Non-motile <i>B. pertussis</i> (99.9%)
Genotypic Analysis Sequencing of 16S ribosomal RNA gene (~ 1470 base pairs)	≥ 99% sequence identity to <i>B. pertussis</i> , strain H921 (GenBank: AXSM02000013.1)	100% sequence identity to <i>B. pertussis</i> , strain H921 (GenBank: AXSM02000013.1)
Purity (post-freeze) Tryptic Soy agar with 5% defibrinated sheep blood 7 days at 37°C in an aerobic atmosphere with 5% CO ₂ Tryptic Soy agar with 5% defibrinated sheep blood 7 days at 37°C in an aerobic atmosphere	Report results Growth consistent with expected colony morphology	No growth Growth consistent with expected colony morphology
Viability 6 days at 37°C in an aerobic atmosphere on Tryptic Soy agar with 5% defibrinated sheep blood	Growth	Growth

Figure 1: Colony Morphology



/Heather Couch/

Heather Couch

11 NOV 2020

Program Manager or designee, ATCC Federal Solutions

ATCC®, on behalf of BEI Resources, hereby represents and warrants that the material provided under this certificate has been subjected to the tests and procedures specified and that the results described, along with any other data provided in this certificate, are true and accurate to the best of ATCC®'s knowledge.

ATCC® is a trademark of the American Type Culture Collection.

You are authorized to use this product for research use only. It is not intended for human use.

