

***Streptococcus pneumoniae*, Strain STREP2**

Catalog No. NR-53529

Product Description:

Streptococcus pneumoniae (*S. pneumoniae*), strain STREP2 was derived from a human wild-type *S. pneumoniae* strain by natural selection using increasing concentrations of streptomycin. NR-53529 was produced by the inoculation of BEI Resources seed lot 20100615 into Todd-Hewitt broth containing 0.5% (w/v) yeast extract, which was grown for 1 day at 37°C in an aerobic atmosphere with 5% CO₂. Broth inoculum was added to Todd-Hewitt agar containing 0.5% (w/v) yeast extract kolles, which were grown for 1 day at 37°C in an aerobic atmosphere with 5% CO₂ to produce this lot.

Lot: 70037045

Manufacturing Date: 10JUL2020

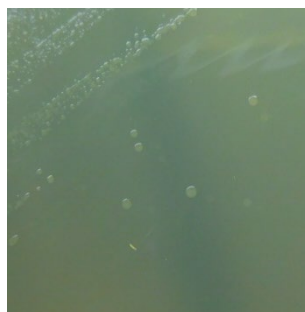
TEST	SPECIFICATIONS	RESULTS
Phenotypic Analysis Cellular morphology Colony morphology 1 day at 37°C in an aerobic atmosphere with 5% CO ₂ on Todd-Hewitt agar containing 0.5% (w/v) yeast extract Hemolysis Motility (wet mount) Biochemical characterization Catalase VITEK® 2 Compact GP card	Gram-positive cocci Report results α-hemolytic Report results Report results <i>S. pneumoniae</i> (≥ 89%)	Gram-positive cocci Circular, convex, entire, smooth and translucent (Figure 1) α-hemolytic Non-motile Negative <i>S. pneumoniae</i> (98%)
Antibiotic Susceptibility Profile¹ Etest® antibiotic test strips 1 day at 35°C in an aerobic atmosphere with 5% CO ₂ on Mueller Hinton agar with 5% sheep blood Streptomycin (bioMérieux 526840)	Report results	> 1024 µg/mL ²
Genotypic Analysis Sequencing of 16S ribosomal RNA gene (~ 1480 base pairs)	≥ 99% sequence identity to <i>S. pneumoniae</i> type strain (GenBank: NR_028665.1)	99.9% sequence identity to <i>S. pneumoniae</i> type strain (GenBank: NR_028665.1) ³
Purity (post-freeze) 7 days at 37°C in an aerobic atmosphere with 5% CO ₂ on Tryptic Soy agar with 5% defibrinated sheep blood	Growth consistent with expected colony morphology	Growth consistent with expected colony morphology
Viability (post-freeze) 1 day at 37°C in an aerobic atmosphere with 5% CO ₂ on Tryptic Soy agar with 5% defibrinated sheep blood	Growth	Growth

¹Minimum Inhibitory Concentration (MIC); MIC Interpretation Guideline: CLSI M100-S28 (2018)

²No Clinical & Laboratory Standards Institute (CLSI) interpretations of this antibiotic for *S. pneumoniae* are currently available.

³Also consistent with other *Streptococcus* species

Figure 1: Colony Morphology



/Heather Couch/

Heather Couch

01 DEC 2020

Program Manager or designee, ATCC Federal Solutions

ATCC®, on behalf of BEI Resources, hereby represents and warrants that the material provided under this certificate has been subjected by ATCC® to the tests and procedures specified and that the results described, along with any other data provided in this certificate, are true and accurate to the best of ATCC®'s knowledge.

ATCC® is a trademark of the American Type Culture Collection.

You are authorized to use this product for research use only. It is not intended for human use.

