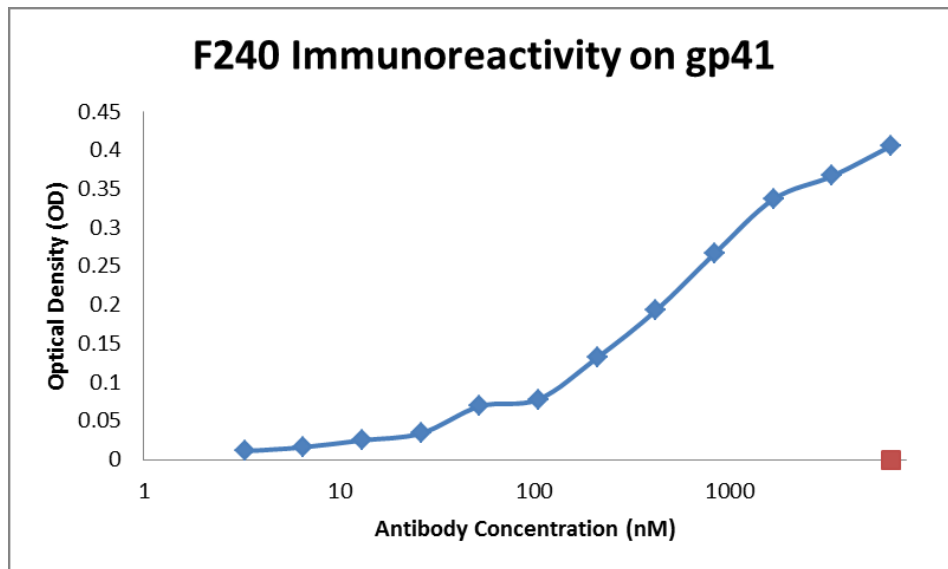
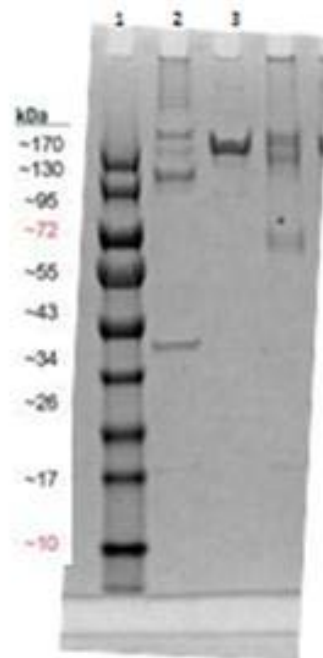


**Immunoreactivity with gp41 by ELISA**



**SDS-PAGE Analysis**

- Lane 1- ladder 170kDa-10kDa
- Lane 2- Hu IgA2
- Lane 3- F240 IgG1 @50ug/ml



**Endotoxin: <0.5 EU/ml**

[www.aidsreagent.org](http://www.aidsreagent.org)

ALL RECIPIENTS OF THIS MATERIAL MUST COMPLY WITH ALL APPLICABLE BIOLOGICAL, AND/OR CHEMICAL SAFETY STANDARDS INCLUDING SPECIAL PRACTICES, EQUIPMENT, FACILITIES, AND REGULATIONS. NOT FOR USE IN HUMANS.